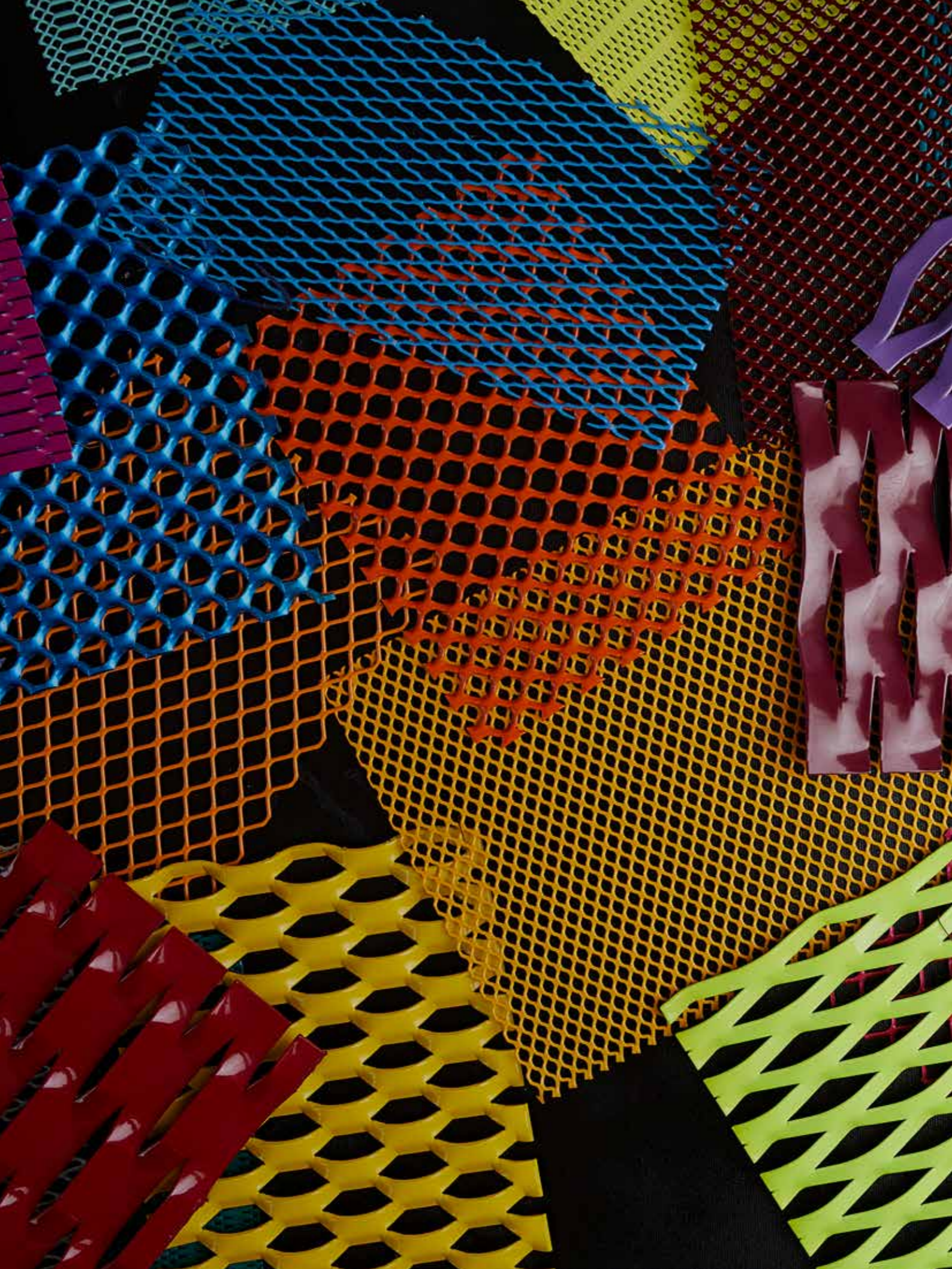




ItaMesh® 





INDEX

	06
ItalMesh	
	08
Design Solutions	
	10
Production Process	
	12
4.0 Company	
	14
Treatments and Finishings	
	16
Design and Engineering	
	18
Quality	
	20
Installation	
	22
Research and Development	
	24
Products Range	
	27
Sustainability	
	28
ZeroGravity Eden	
	30
References	

ItalMesh® 

DRESSING
INNOVATIVE
PROJECTS



ITALMESH SPECIALIZED AND TECHNOLOGICALLY ADVANCED COMPANY

ItalMesh is an Italian company specializing in the implementation of architectural projects with the use of expanded metal mesh and perforated panels, serving both national and international markets. The products made by ItalMesh can be used for exterior applications, such as cladding for facades, sunshades, balustrades and fences, as well as for interiors such as false ceiling and interior design. The high technology and quality of materials and workmanship, combined with the infinite combinations of shapes and colors available, allow for a fine combo of aesthetics and functionality, making ItalMesh creations versatile and always innovative.

It offers to the market more than 300 models of expanded metal mesh and perforated custom panels, realized in different materials and with different thicknesses. The innovative anchoring systems designed and patented by the ItalMesh team allow easy and quick assembly. The powder-coated or anodized finish allows the material to self-clean and keep its physical and aesthetic characteristics over time.





FROM THE SIMPLEST TO THE MOST COMPLEX SOLUTIONS FOR ANY ARCHITECTURAL PROJECT

The goal of the ItaiMesh team is about giving life to the architectural project through the study of the best engineering and structural solutions, so as to be able to perfectly combine aesthetics, design, practicality and innovation.

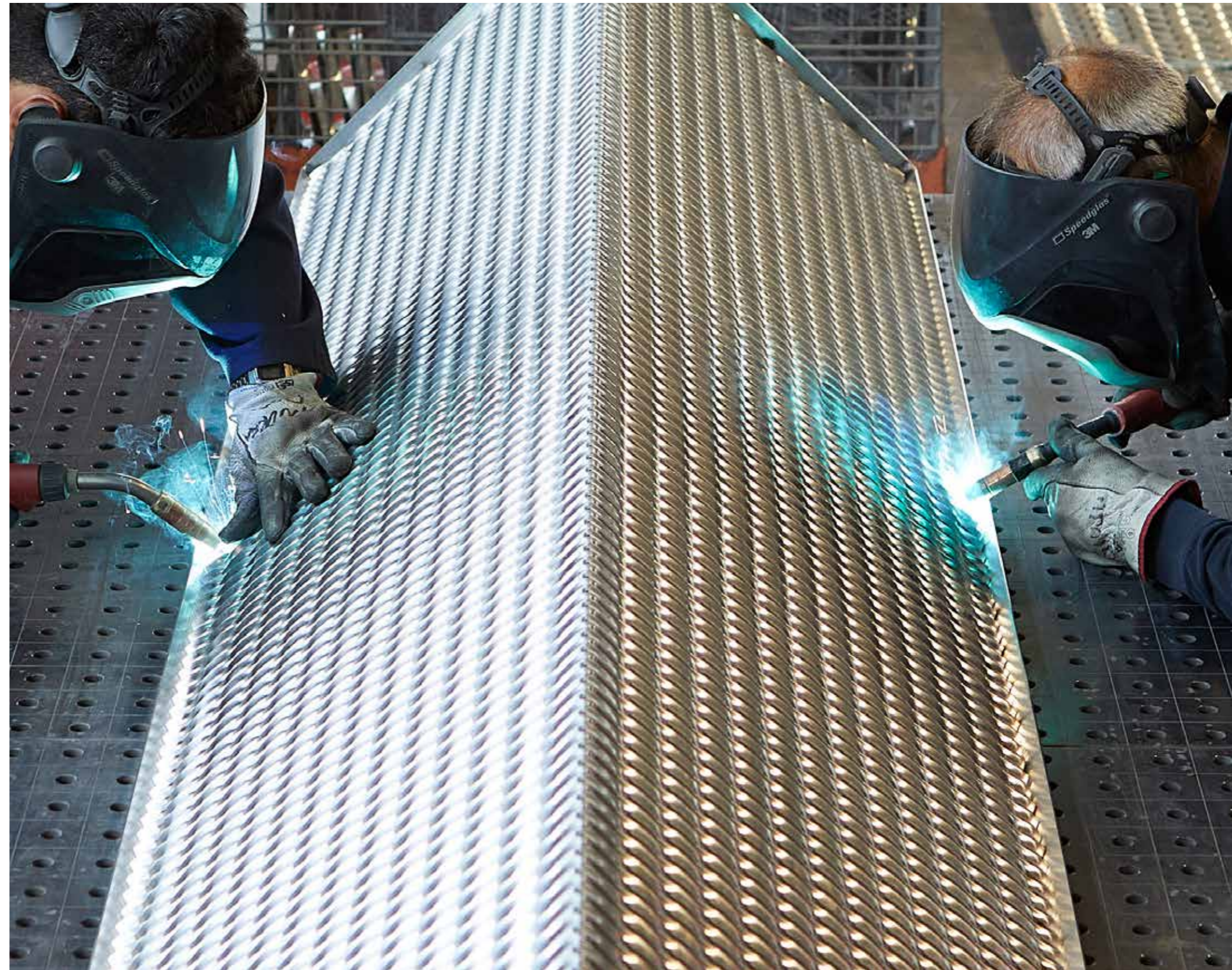
The ItaiMesh team follows the customer in the completion of their project through all the phases, from concept to design, engineering, product development and installation.

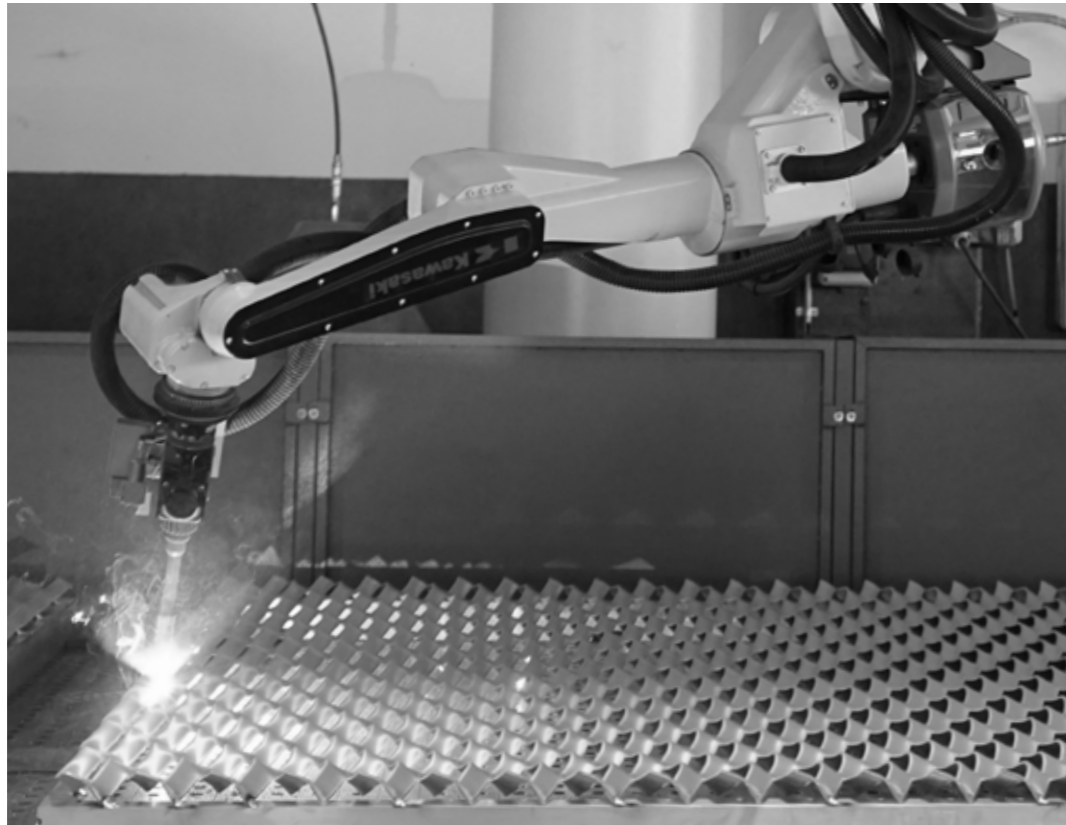
The continuous research for new materials, application systems and finishes give the products versatility. ItaiMesh materials are not used exclusively for new buildings, but also for the modernization and redevelopment of existing buildings for which innovative solutions are proposed. ItaiMesh products are customizable and satisfy customers' creativity by supporting them in transforming their ideas into reality. All materials are entirely Made in Italy, 100% recyclable, certified according to current national and international standards and regulations.

PRODUCTION PROCESS

ItalMesh production covers over 20.000 square meters and is made up of latest generation machinery interconnected and communicating with the programming and planning offices. The production areas are divided into sheet metal processing sectors with cutting and bending areas, profile processing areas with machining centers and marking machines. The robotic welding area guarantees fast times and production consistency for both large and small batches.

ItalMesh has also dedicated an area of the plant to the creation of surface finishes, with two latest generation of robotic powder coating lines.





BECOMING A 4.0 COMPANY

In the last years, ItaiMesh has made of automation its own goal, speeding up processes, human-machine interaction and above all traceability. Being able to control the production process is very important, every single product is marked with a code, which not only identifies it, but allows you to trace back to every stage of the production process, from the purchase of the raw material, to the processes carried out, to the control of the finish, tracing the exact positioning inside the packaging in order to facilitate commissioning.



SURFACE TREATMENTS, POWDER COATING AND ANODIZING

The finishes are designed not only to offer special aesthetic effect that embellish each project, but also as a protective coating that allows high resistance to the most extreme climatic conditions.



POWDER COATING

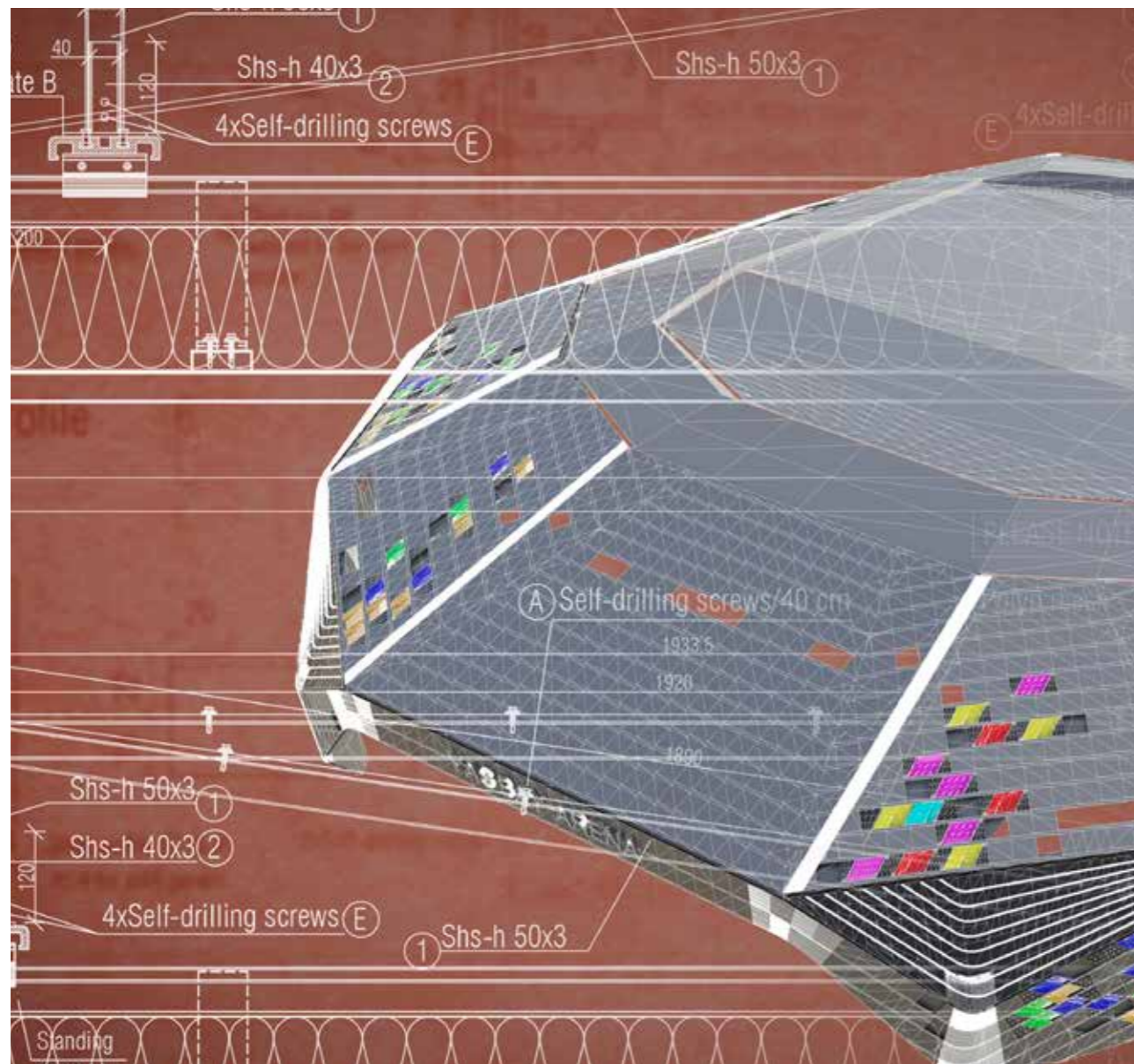
The company is able to quickly provide various customized color solutions and guarantee durability and uniqueness at the same time. The powder coats used are composed of thermosetting resins with the addition of pigments giving the color. The powder coating cycle consists of 7 stages of pre-treatment in washing tunnels, powder coating in automated booths equipped with anthropomorphic robots. All parameters are constantly recorded and monitored. Powders used are completely non-toxic, with high resistance to UV rays and corrosion.

ANODIZING

The electrolysis process is carried out in special tanks where direct current passes through and the coloring takes place. A protective oxide layer forms on the surface of the treated metal and protects it from corrosion. The electrochemical treatment of metal surface improves corrosion and wear resistance.

DESIGN AND ENGINEERING

The ItaiMesh team of engineers, architects and production technicians provides a complete study of the project, supporting the customer from the early design stages up to materials installation supervision on site.



ItaiMesh provides:

- Concept design
- Identification of customer needs
- Study of architectural and aesthetic solutions
- Project development
- Engineering and realization of executive technical drawings
- Animation and creation of interactive 3Ds
- Fluid dynamic simulation
- Thermal simulations
- Structural simulations
- Prototyping and mock-ups
- Installation and supervision on site

ItaiMesh also has within its professionals specialized in Building Information Modeling (BIM), a methodology that helps plan and optimize production, as well as the realization and management of the construction project. All data relating to the project can be collected, combined and connected digitally within a database.

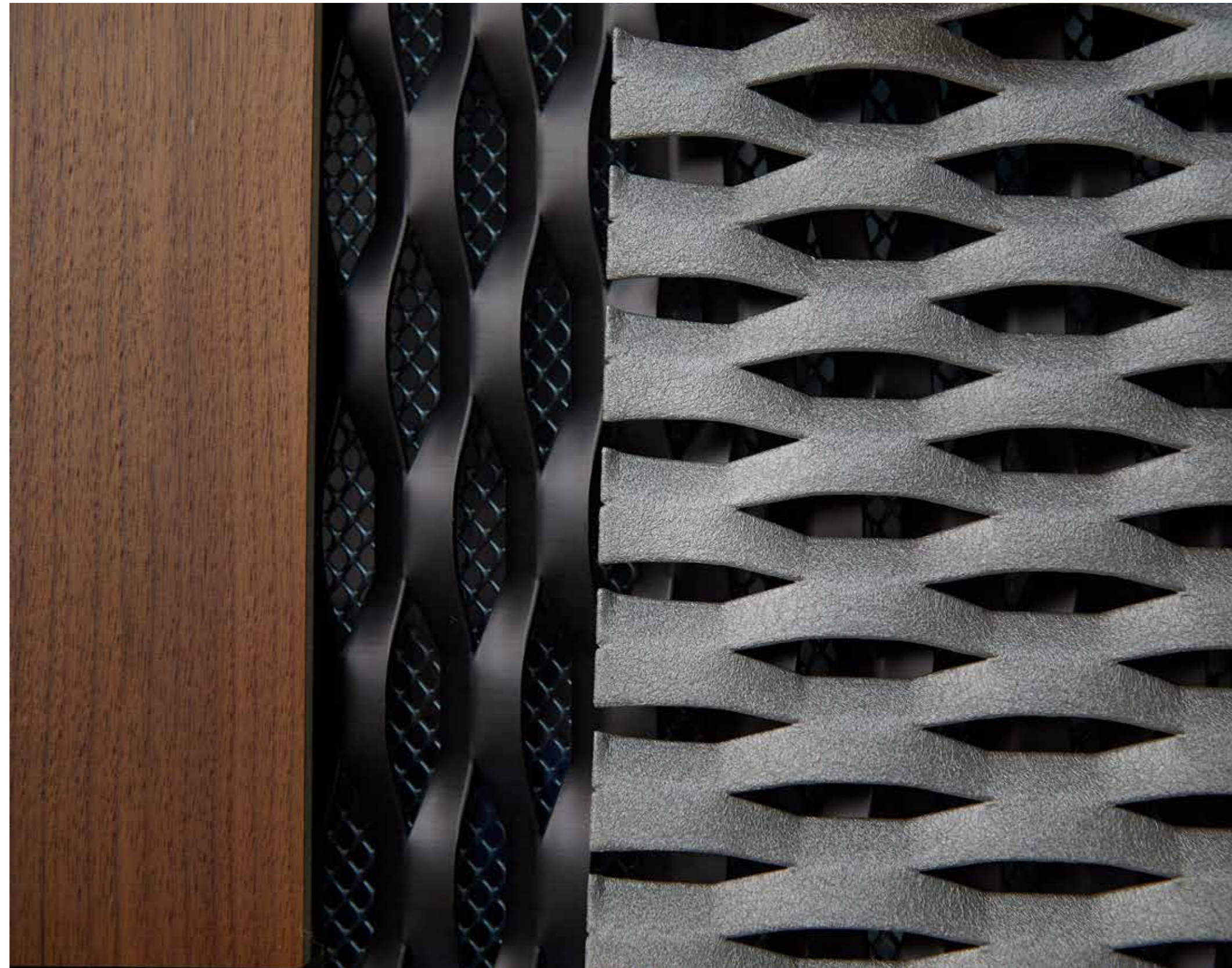


QUALITY

Quality in ItaiMesh is seen by the whole company as a tool to improve customer satisfaction and as a stimulus for better operational efficiency.

The correct and consistent definition of processes supports collaboration between all departments, production and support. Since 2010, the ISO 9001 and ISO 14001 certification have been achieved, as well as the ESMA certification, specific for the Middle Eastern markets. In 2021 ItaiMesh obtained the ISO 17065 certification (ASTM D1929-20 & UNI EN 1350-1:2019) for the ignitability of the products.

The careful choice, evaluation of raw material suppliers and close collaboration with partners is a fundamental aspect that guarantees high quality standards.





FOLLOW ALL PROJECTS FROM THE INITIAL PHASE TO INSTALLATION

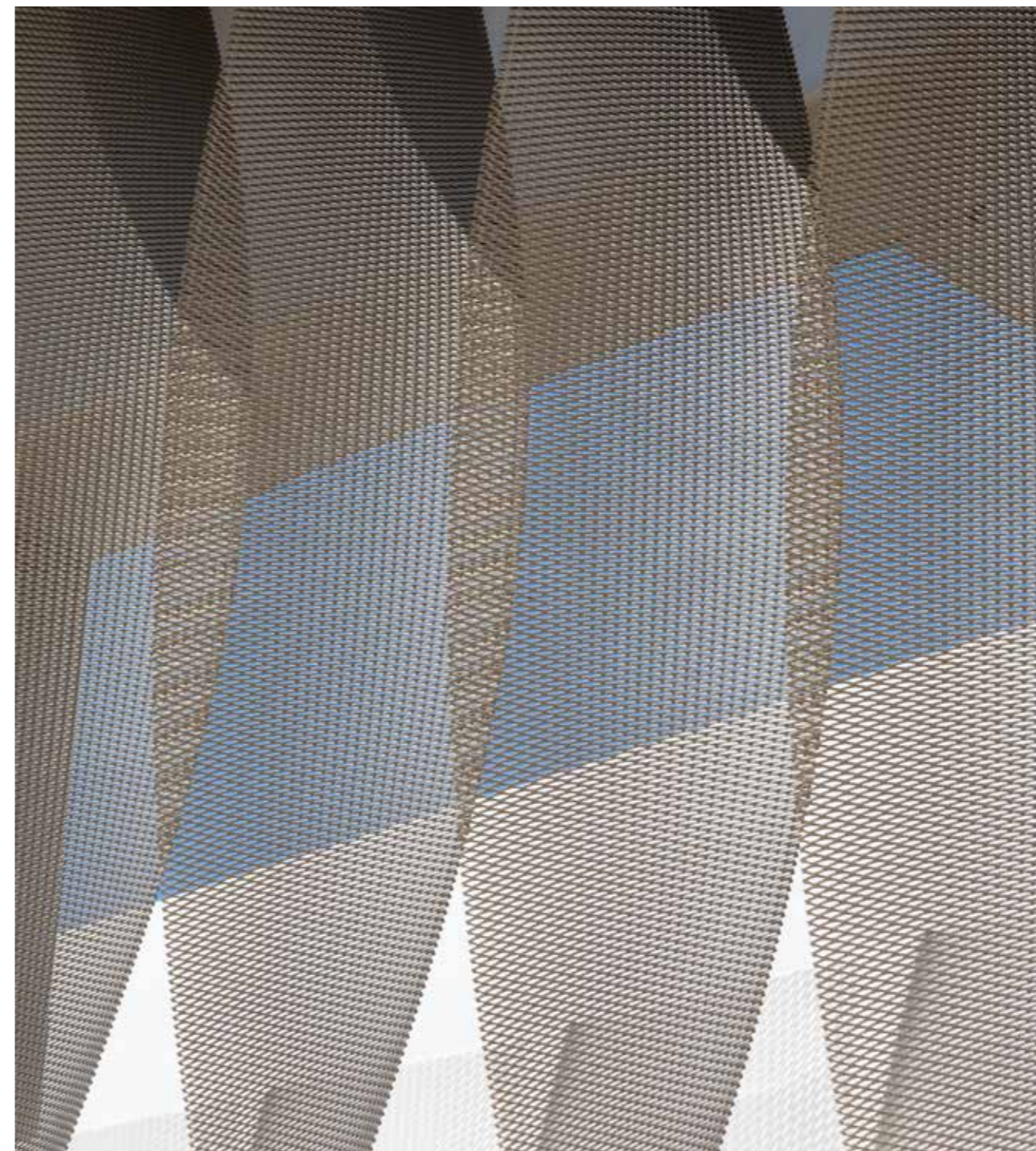
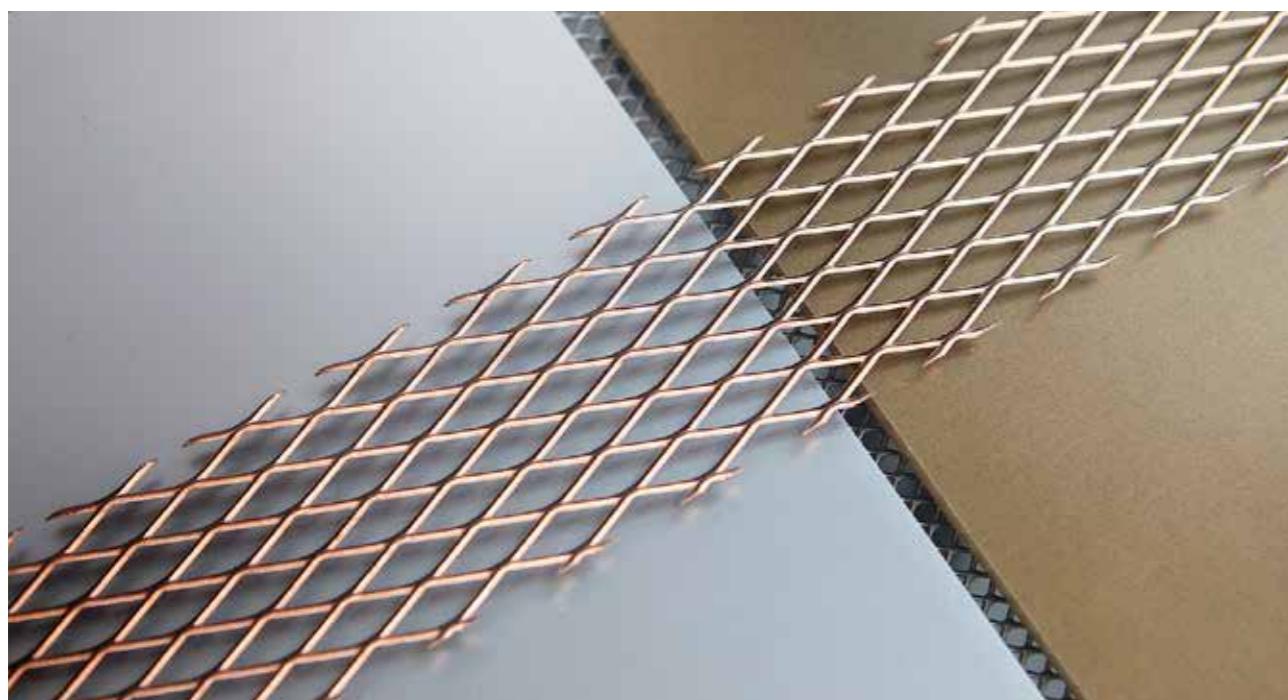
The patented fixing methods have been specially designed by the ItaiMesh team so the installation is quick and easy. The panels installed with ItaiMesh systems are removable. ItaiMesh has achieved the RT-05 certification (Accredia Technical Regulation 05) which contains provisions for the assessment and certification of the Quality Management Systems (ISO 9001: 2015) of the construction and installation companies of plants and services operating in the construction sector.

This regulation provides guidelines for the management of site access and management documentation which, in addition to the safety aspects, includes a series of documents to provide complete traceability of the product. Being able to identify each single panel is essential for the complexity of some projects and given guarantees.

RESEARCH AND DEVELOPMENT FOR CUSTOM PROJECTS

ItalMesh wanted to create within the company a team dedicated to RESEARCH AND DEVELOPMENT in order to be able to fulfill the most varied requests of its customers. Each solution proposed by ItalMesh is always different and original, with attention to practicality and functionality. Made-to-measure means engineering of dimensions, to reduce scraps and therefore costs. The finishes guarantee durability over time and therefore contribute to eco-sustainability, today a must for a careful and responsible society.

The design of the coatings must also take into account the specific needs related to the intended use and construction constraints dictated by the executive drawings. Thanks to the characteristics of the expanded metal, to the technology and to the specialized processes, ItalMesh provides the maximum guarantee for both small and large projects.



The strength of ItalMesh is the tailor-made realization. For the architecture sector, completely customized products come out from the production departments, in size and shape, in finishes and mounting systems. This simplifies the designer's work and optimizes costs.



100%
Recyclable



100%
Made in Italy

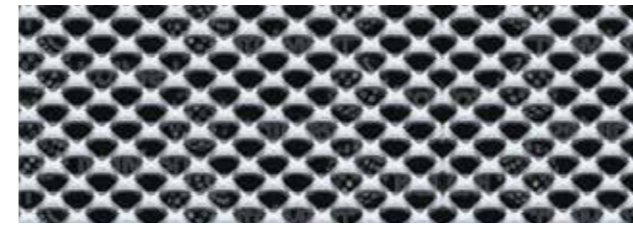
PRODUCTS RANGE

EXPANDED MESH

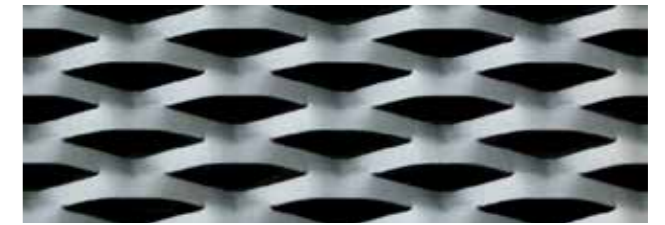
The more than 300 models of expanded mesh that Italmesh offers to the market can be made of iron, aluminum, stainless steel, weathering steel, copper and brass, with thicknesses ranging from 0.5 mm up to 5 mm. The expanded meshes, with the alternation of curved and flat surfaces, the effect of full and empty spaces, with plays of light and shadows create unmistakable aesthetic effects.

PERFORATED PANELS

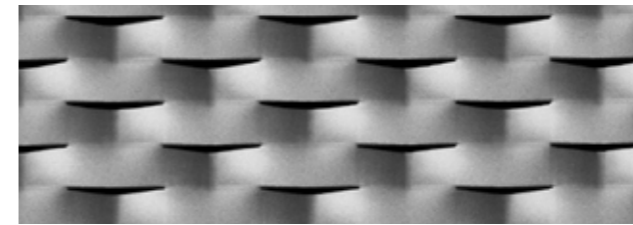
The capacity and production innovation have allowed Italmesh to create panels with customized designs through the different types of drilling and laser cutting, which find application in architectural field.



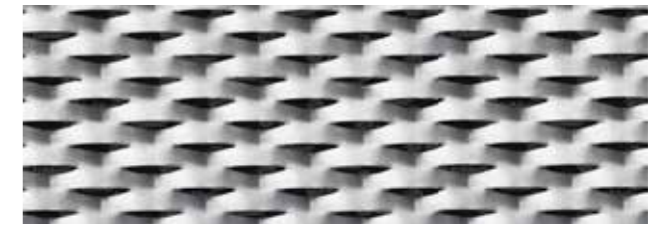
AQUILA



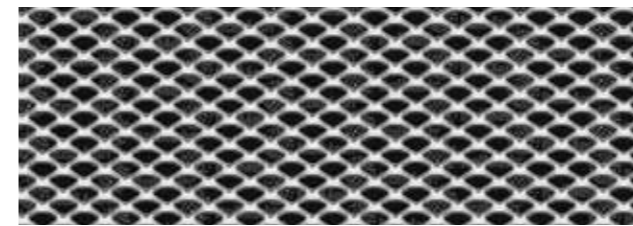
BRESCIA



COMO



MILANO



RIMINI



ROMA



SIENA



TORINO



VENEZIA



VICENZA

MODULARITY

From the simplest to the most complex solutions for any architectural project.



EASE

The technological solutions allow fast and simple installation.

QUALITY

Italmesh's products are perfectly coplanar and guaranteed over time.

EFFECTS

Expanded meshes create extraordinary effects that meet the client's creativity, with always innovative products.

CREATIVITY

Italmesh can customize every variant of shape, size and color.

THREE-DIMENSIONAL FORMS

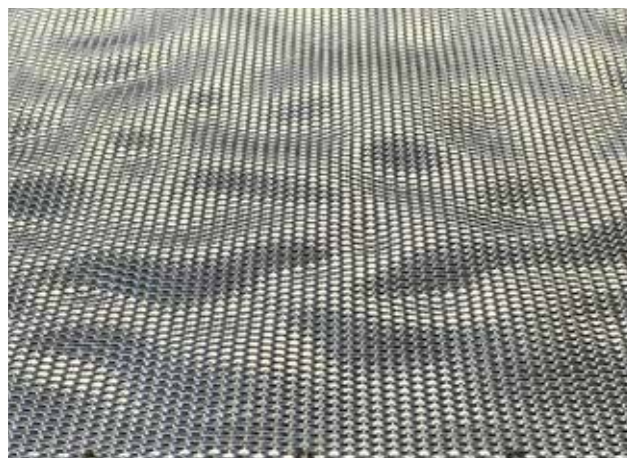
Modern manufacturing processes make possible to create three-dimensional shapes using expanded mesh to respond to individual customer wishes. Inspired by geometries and natural elements, the expanded metal creates unique optical effects, that change with the variation of light and the point of observation.



CRYSTAL



WATERWAVE



DUNE



WATERWAVE

ITALMESH IS A GREEN COMPANY

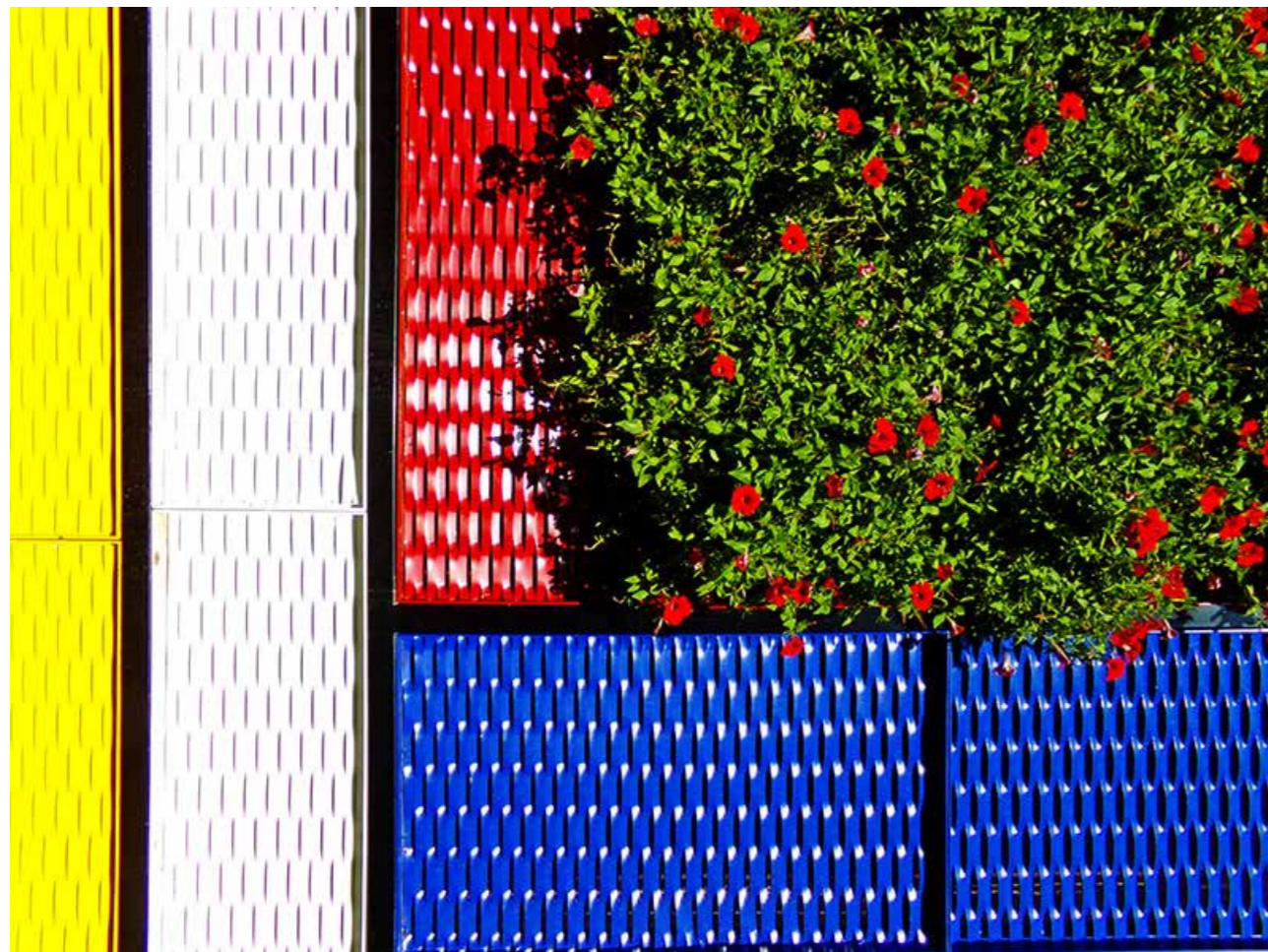
ItalMesh has always supported the use of eco-sustainable technologies with low environmental impact. Within the production plant, a strongly focused policies have been implemented to separate waste collection, its recycling as well as the recovery of the raw materials used, mainly steel and aluminum. Since 2018, ItalMesh's production has been powered 90% by energy produced by the photovoltaic system installed above the company.



ZERO GRAVITY EDEN

Zero Gravity Eden is the green project in support of sustainable architecture by ItalMesh. The expanded metal meshes are transformed into a real vertical garden. These are green walls designed to cover buildings with the objectives of optimizing energy performance, improving their aesthetics and reducing CO₂.

The product includes an automatic irrigation system and involves the cultivation of plants of multiple species selected by the team of agronomists and landscape architects who support the customer in choosing the best plants and seeds for the realization based on the location of the project. The goal of ItalMesh is to create vertical gardens that last and grow over time with reduced maintenance costs. In collaboration with the Politecnico di Milano, patented Zero Gravity Eden panels were installed inside the University Center, to test the benefits of the environmental impact of the Green Walls, in a metropolitan city like that of Milan.



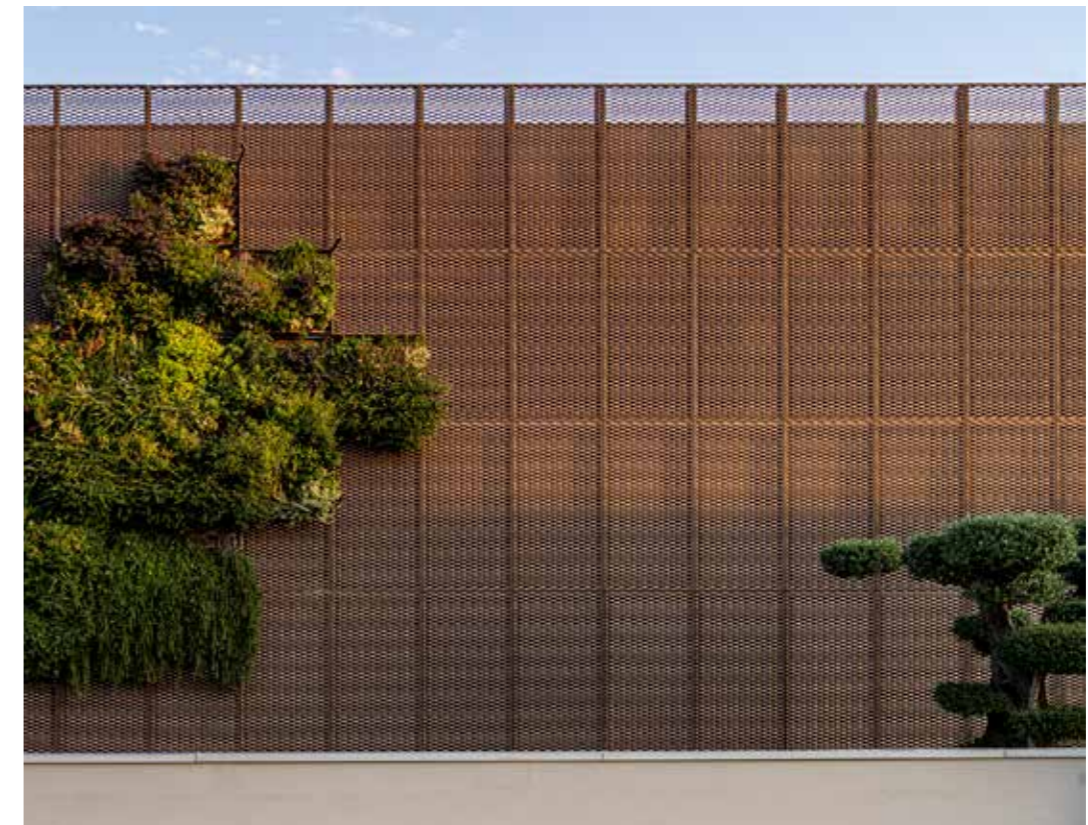
ITALMESH HEADQUARTER

In the project of cladding and redevelopment of the entire façade of the Montirone headquarter, expanded metal mesh Siena 150 in aluminum and Vertical garden panels Zero Gravity Eden were used. The effect of vertical green and expanded metal mesh give the industrial structure elegance and dynamism, with an eye to eco-sustainability and environmental protection. In fact, over 300 square meters of Zero Gravity Eden modules planted with over 4.500 plants have been inserted. The modules of vertical garden ensure thermal and sound insulation and a significant reduction in CO₂.

LOCATION
Brescia - Italy

TOTAL SQM
1.500

MESH
Siena 150 / Zero Gravity Eden





ETIHAD ARENA

It is the largest and most modern indoor multi-purpose facility in the Middle East with a capacity of 18.000 spectators and hosts a wide range of events: sports, concerts, theatrical performances and celebrations. Etihad Arena is not only a modern architectural structure, but also a 100% sustainable construction. In fact, it won the Sustainable Building Design of the Year at the MENA Green Buildings Awards 2018. An iconic design inspired by the woven meshes of the baskets used by the Bedouin tribes and a modern structure that nevertheless means to have a close link with the history of the country. It is located on the lively waterfront of Yas Bay on Yas Island, one of the largest man-made islands built in Abu Dhabi.

The construction was completed in 2021. Italmesh participated in the design, engineering and construction of all the modules used for the cladding of the external facades of the arena. The technicians carried out a study for over a year in order to find the ideal solution for the installation of over 28.000 expanded mesh panels of expanded metal meshes of which 2.000 standard and the remaining all customized and different. The Italmesh team followed every phase of the production process, organizing the installation sequence, making sure aesthetics and functionality were well combined, while engineers and architects were in charge of the work. Precisely for this reason, high quality raw materials and finishes were chosen.

LOCATION
Abu Dhabi - UAE

TOTAL SQM
25.000

MESH
Brescia 200R / Roma 65 / Rimini 15 /
Siena 45





SPORT ARENAS

ItalMesh has been hired for the construction of the two new hockey arenas interiors, built for the 2022 Brock University Summer Games in Canada.

Fourteen hundred square meters of ItalMesh model Brescia 200 aluminum stretched mesh with a natural finish, obtained through anodizing processes, has been used to clad the interior areas of the arenas, which are each on 2 floors.

The mixture created between Italmesh panels, materials, colours and lights make the areas functional and modern.

LOCATION
Niagara - Canada

TOTAL SQM
1500

MESH
Brescia 200



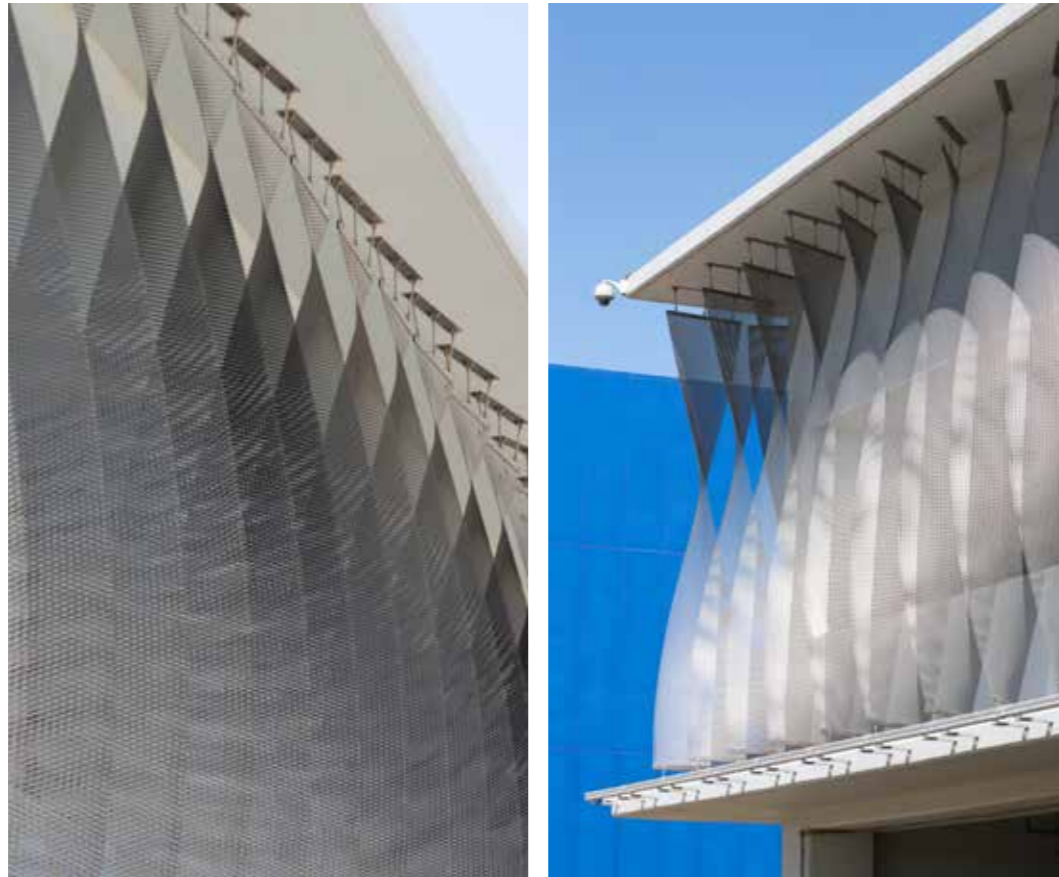
YAS MALL

Yas Mall is the most innovative and attractive shopping and entertainment destination in the heart of Yas Island in Abu Dhabi. Italmesh products were used for the cladding of the facades of the multi-storey car park, the largest in the world that can accommodate up to 10.000 cars. The Roma 65 meshes in AISI 316L, powder coated with a clear coat transparent finish, have been installed with an innovative design that creates a three dimensional effect.

LOCATION
Abu Dhabi - UAE

TOTAL SQM
6.000

MESH
Roma 65



AUTOGRILL

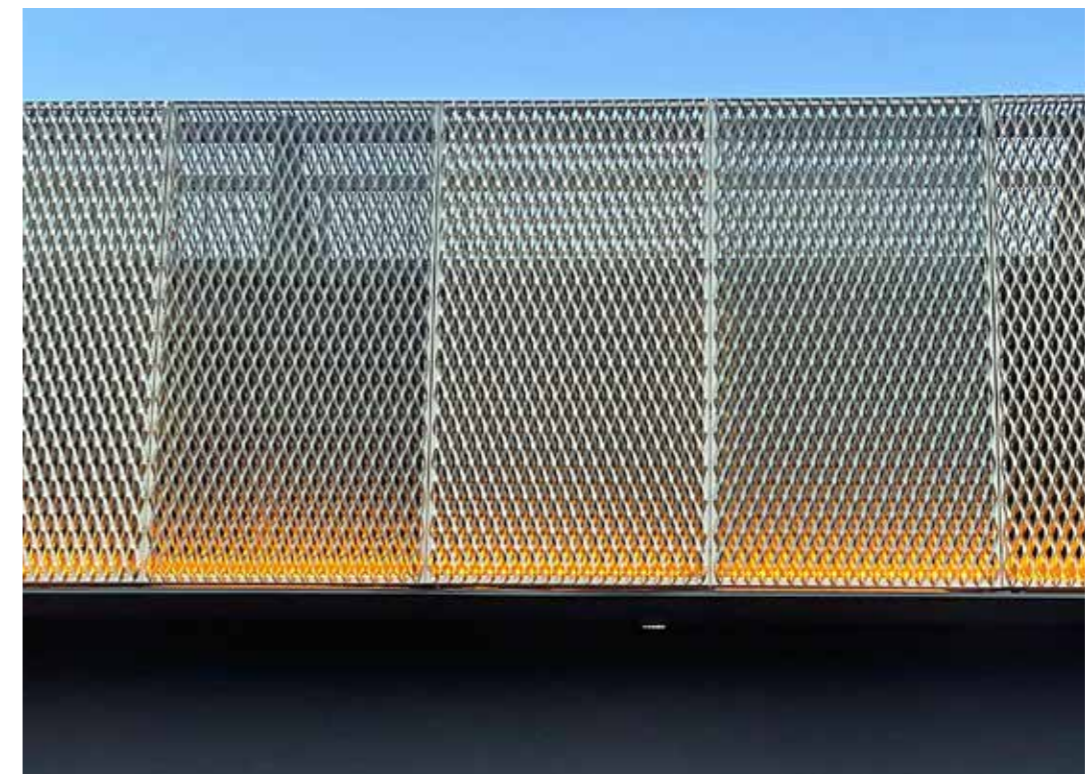
In 2021, the Italmesh team had the opportunity to collaborate to the construction of the Autogrill of Montepulciano. After the demolition of the famous Autogrill Pavese designed by architect Angelo Bianchetti in the 1960s, symbol of Italy's economic boom, two new super-modern and energy-efficient Autogrill were built. Italmesh contributed to the exterior facades with the use of panels that work not only as cladding but also as lighting fixtures.

Low-energy LED strips were installed in each panel, which, when evening falls, create light and shadow tricks thanks to the texture of the stretched mesh covering the entire building.

LOCATION
Montepulciano - Italia

TOTAL SQM
560

MESH
Brescia 200



BURGER KING ROVERETO

The Italmesh Team engineered and produced the external cladding of the building of the new Burger King store in Rovereto. 1250 square meters of perforated aluminum sheet painted with a highly durable white powder-coated product were used which, depending on how it refracts the sunlight and the position of the observer, gives depth and movement to the complex. All the metal inserts and red outlines were also made, creating a contrast with the glossy white of the walls. A careful building with an unmistakable outline.

LOCATION
Rovereto - Italy

TOTAL SQM
1250

MESH
Perforated sheet panels





IVAR

Ivar, an Italian company specialized in the design and production of energy-efficient heating and plumbing systems, has decided to clad its new Academy with Siena 150 ItalMesh expanded metal mesh.

A large orange cube whose solidity is interrupted by vertical cuts that reveal the concrete cube hiding behind the expanded metal covering. The choice of colour orange Ral 2004, which is the representative colour of the Prevalle company, makes the structure unique and recognizable to all.

ItalMesh team contributed to the design, production and installation of the façade cladding covering over 700 sqm. Some panels were sized and cut in order to create the movements and cuts conceived by the design.

LOCATION
Brescia - Italy

TOTAL SQM
700

MESH
Siena 150



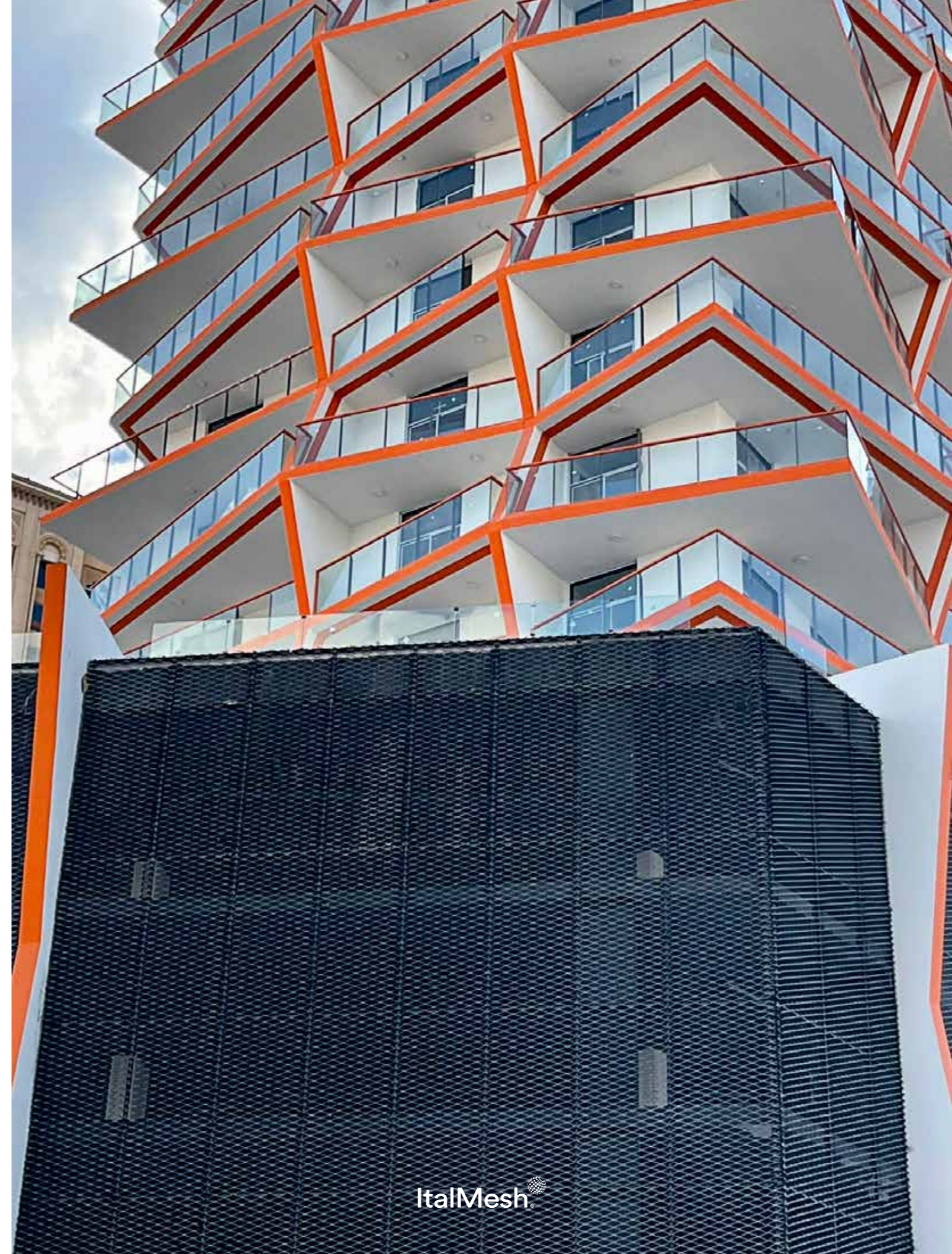
BINGHATTI

With dynamic growth in recent years, Muhammad Binghatti became pioneer of a new era in Middle East thanks to his real estate architectural and design portfolio with a revolutionary architectural design. The new residential complex designed by Binghatti has been inspired by traditional pearls fishing; it can be seen from the external facades that remind the structure of pearls shells. The concept of his project has the deep historical roots revisited with contemporary glance. Another peculiarity lays on its geometrical structure which differences it from most skyscrapers of Dubai city. Italmesh has participated to the construction of this architectural masterpiece by realizing the lower part of the building using 6000smq black powder-coated "Brescia250" panels.

LOCATION
Dubai - UAE

TOTAL SQM
6.000

MESH
Brescia 250



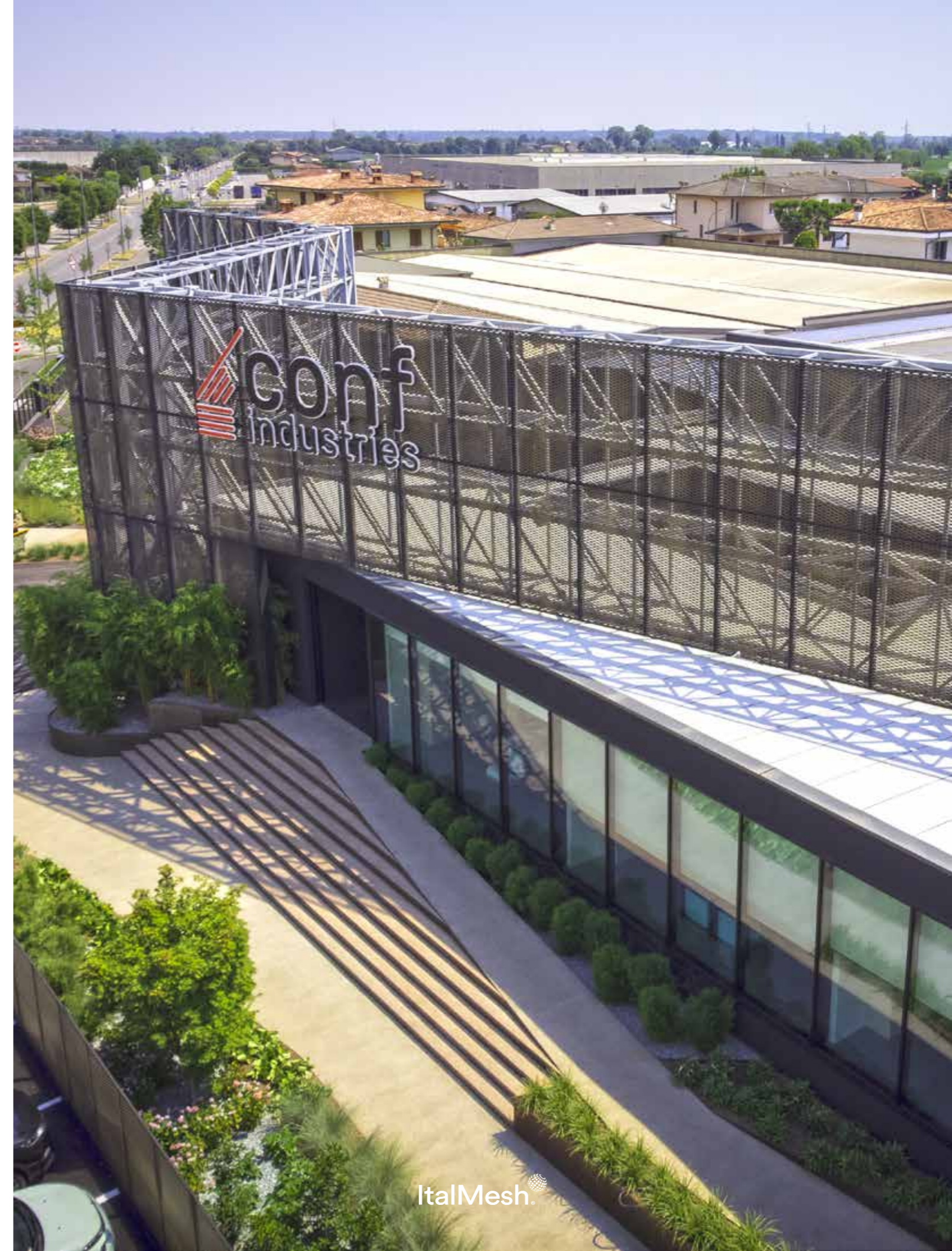
CONF INDUSTRIES

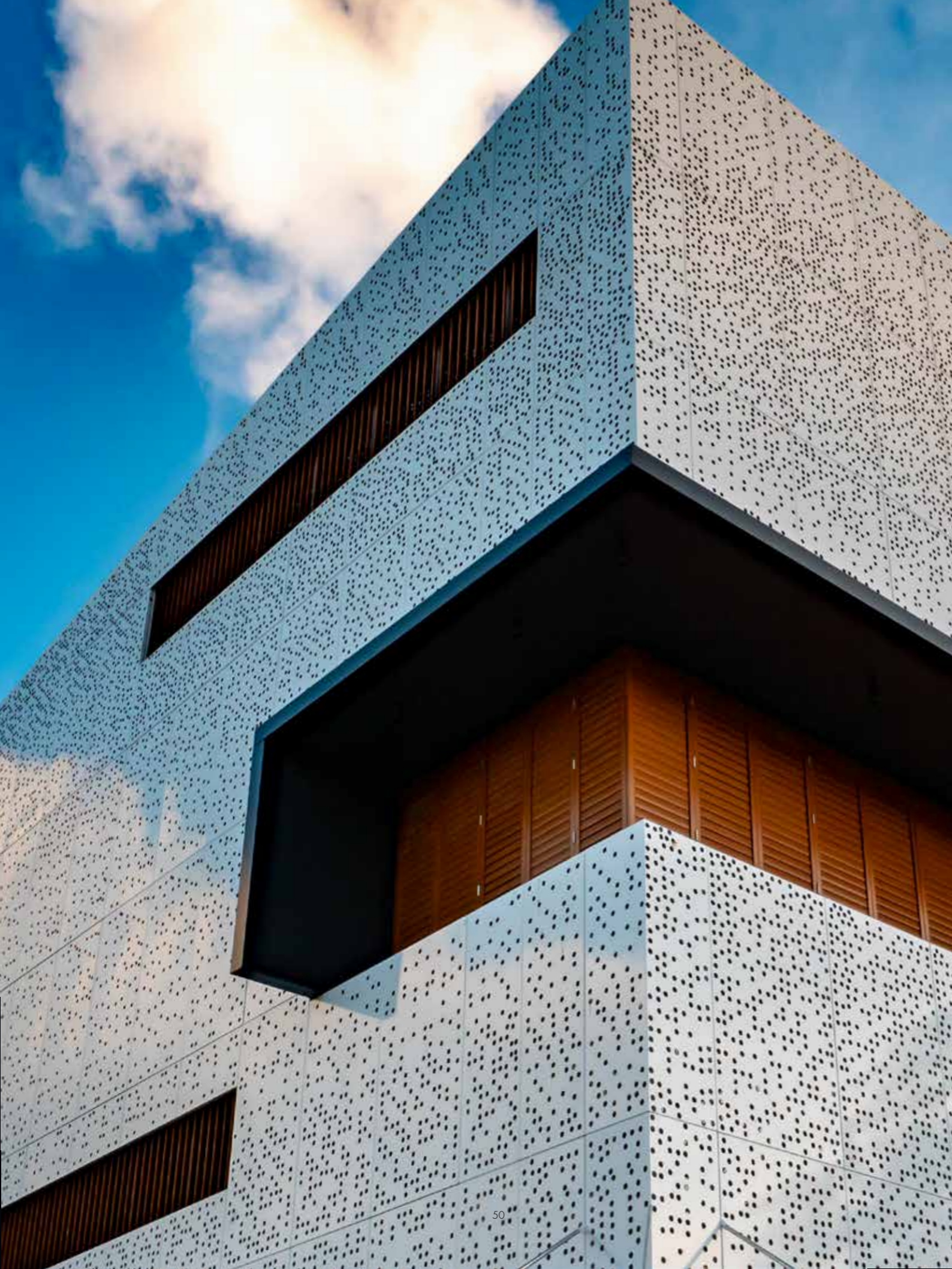
This Italian company is a global reference point for handling and storage systems, furnishings for the most various needs of different areas of industry and services; it turned towards ItalMesh for the cladding of the facade and the fencing of the external area. For the facade cladding and the fencing have been used over 2000 sqm of expanded metal mesh model Siena 150 in aluminium powder coated with a special bronze color that changes according to the sun light reflection.

LOCATION
Brescia - Italy

TOTAL SQM
2.000

MESH
Siena 150





DOCKLANDS

Redevelopment of a multi-purpose center in the Seychelles, in the city of Victoria was carried out in collaboration with the AHTIME Architects Studio. The intervention involves the cladding of the facades with perforated aluminum sheet metal panels. Cladding and holes design was completely conceived and implemented by the ItaiMesh team. The project takes on a new elegant dress when the sun goes down, in fact, by exploiting the play of full and empty, the facades of the multipurpose center become real lighting fixtures, giving the building the look of a lantern.

LOCATION

Victoria - Isole Seychelles

TOTAL SQM

1.200

MESH

Perforated sheet panels

ARCHITECT

AHTIME Architects



KAFD CAR PARK

Multi-storey car park of the financial center and subway station in Saudi city Riyadh. Italmesh has developed the design and production of about 4.000 panels of expanded metal mesh model Brescia 75, which cover the facades of the building.

Features of the project are more than 400 models of panels designed by the technical team, the three-dimensionality given to the panels thanks to the scrupulous design with the realization of folds and grooves also the color of the expanded metal mesh. A mix of 6 anodized colors give dynamism and elegance to the entire structure.

LOCATION
Riyadh - Saudi Arabia

TOTAL SQM
11.000

MESH
Brescia 75





LE VELE

At the beginning of 2022, the project of modernization and expansion of the shopping center "Le Vele" in Desenzano del Garda was launched.

An architectural redevelopment that affects both the interiors and exteriors.

An innovative design that doesn't forget the traditions of the area skill connected to the lake and the sails of the boats, from which the name of the center derives.

ItalMesh contributed to the restyling of the facade. For the cladding, 1350 mq of expanded mesh panels model "Brescia75" in aluminum were chosen and installed, calendered and powder coated in RAL 9003 color.

LOCATION
Desenzano - Italy

TOTAL SQM
1320

MESH
Brescia 75





GUARNI & MED

A leading company in the medical sector has chosen ItalMesh for the renovation of the facades of its production site in Bergamo. For the realization 700 panels of ItalMesh model Siena 150 expanded mesh, powder coated Metalized Bronze and 50 modules of Zero Gravity Eden vertical garden were used.

The goal of the Varischi Architecture Studio and the ItalMesh team was to combine the aesthetic impact with the functionality of the coating. The solution created ensures sound insulation and reduction of CO₂ emissions.

LOCATION

Bergamo - Italy

TOTAL SQM

2.500

MESH

Siena 150 / Zero Gravity Eden

ARCHITECT

Varischi



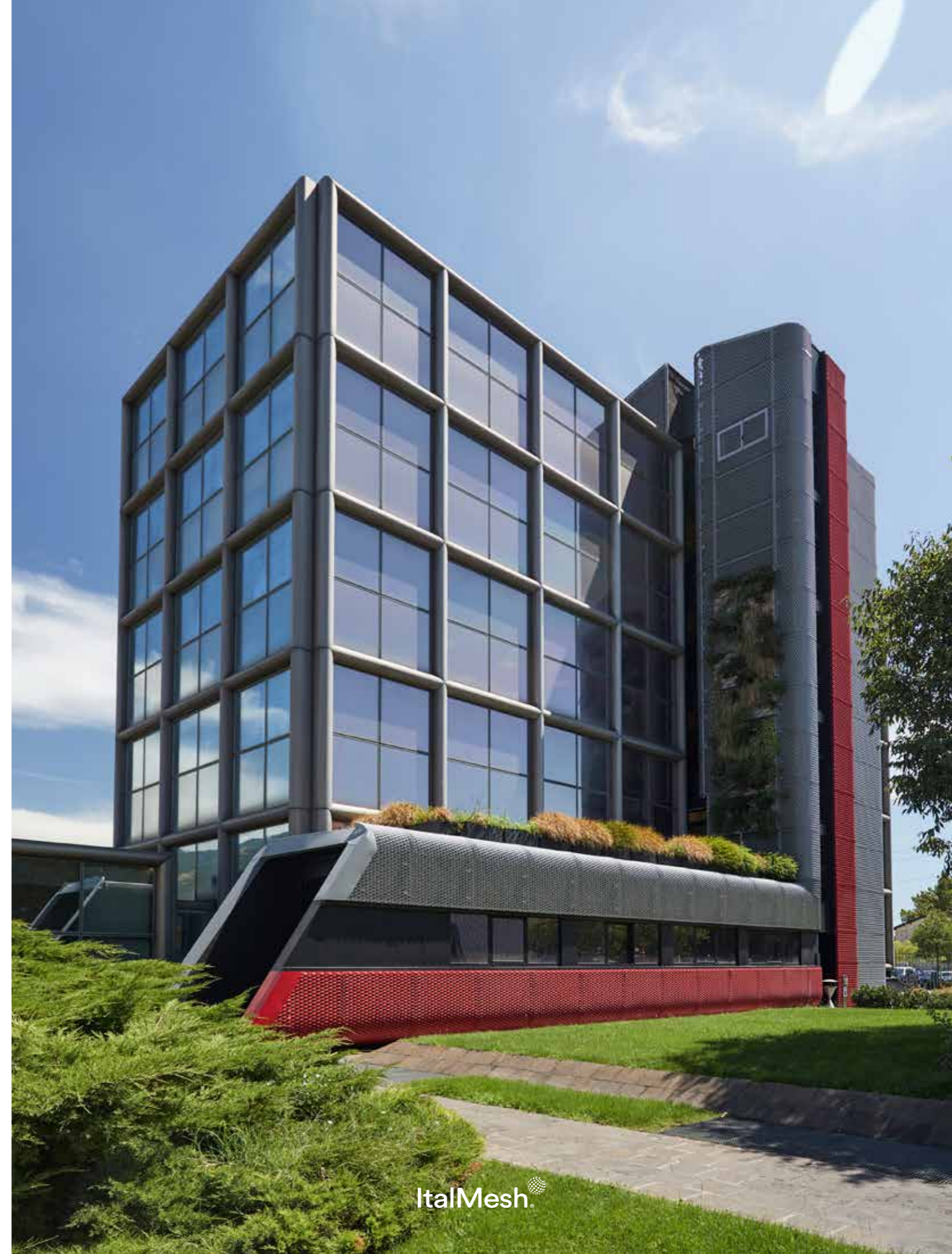
ALFA ACCIAI

The areas involved in the redevelopment of the Brescian company are the office building and the main entrance of the company. To carry out this project, ItalMesh Siena 150 expanded mesh panels and Zero Gravity Eden vertical garden panels were used. This solution is optimal for reducing emissions from production plants and for beautifying buildings.

LOCATION
Brescia - Italy

TOTAL SQM
800

MESH
Siena 150 / Zero Gravity Eden



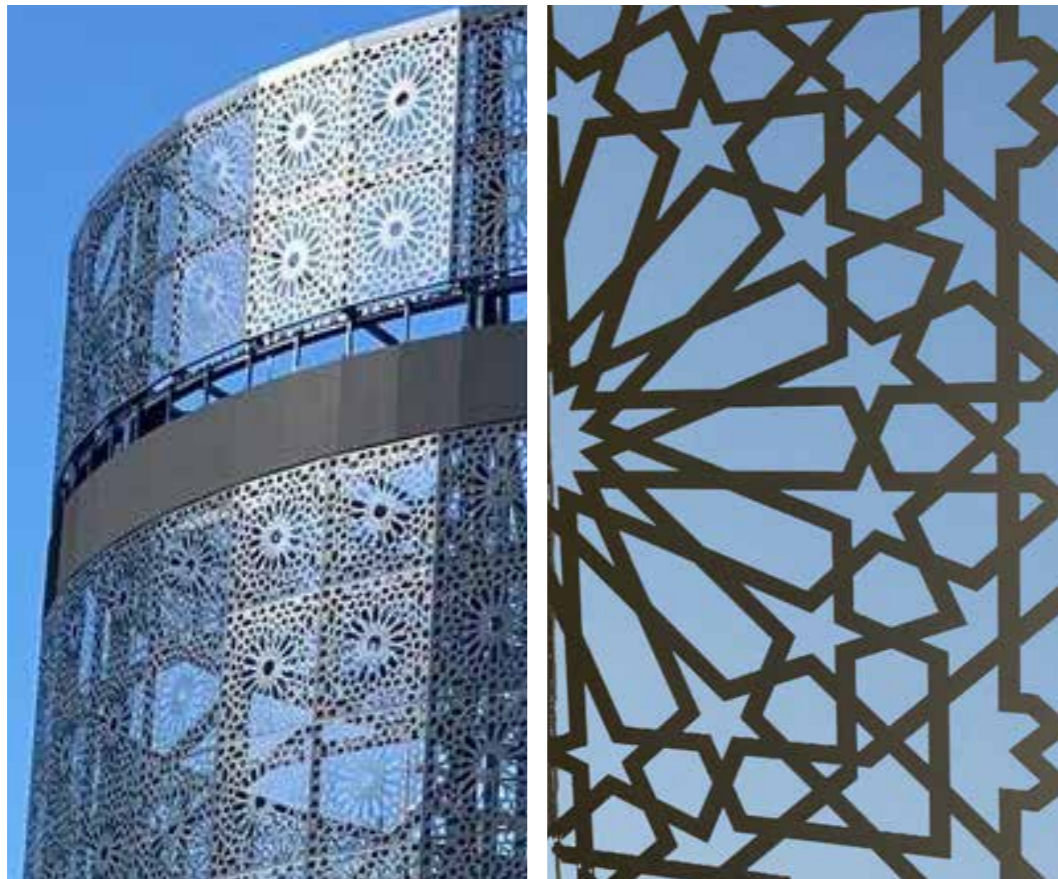
PARNDORF

In the project of requalification of Fashion Outlet, Italmesh has contributed to the realization of the coating of circular tower. During the design phase the circumference has been discretized with rectangular panels so that the flat sheet panel could follow the circular movement of the structure. The geometric shape created on the over 800 mq aluminium panels realized with laser cut and coated with metallized brown powder product, gives elegance to the entire structure and is the framework to the videowall installed in the tower.

LOCATION
Parndorf - Austria

TOTAL SQM
800

MESH
Laser cut sheet metal



PEARL MARZOUQ

Pearl Marzouq is an historic building, located in the central area in Kuwait, which occupies an area of 5.600 square meters.

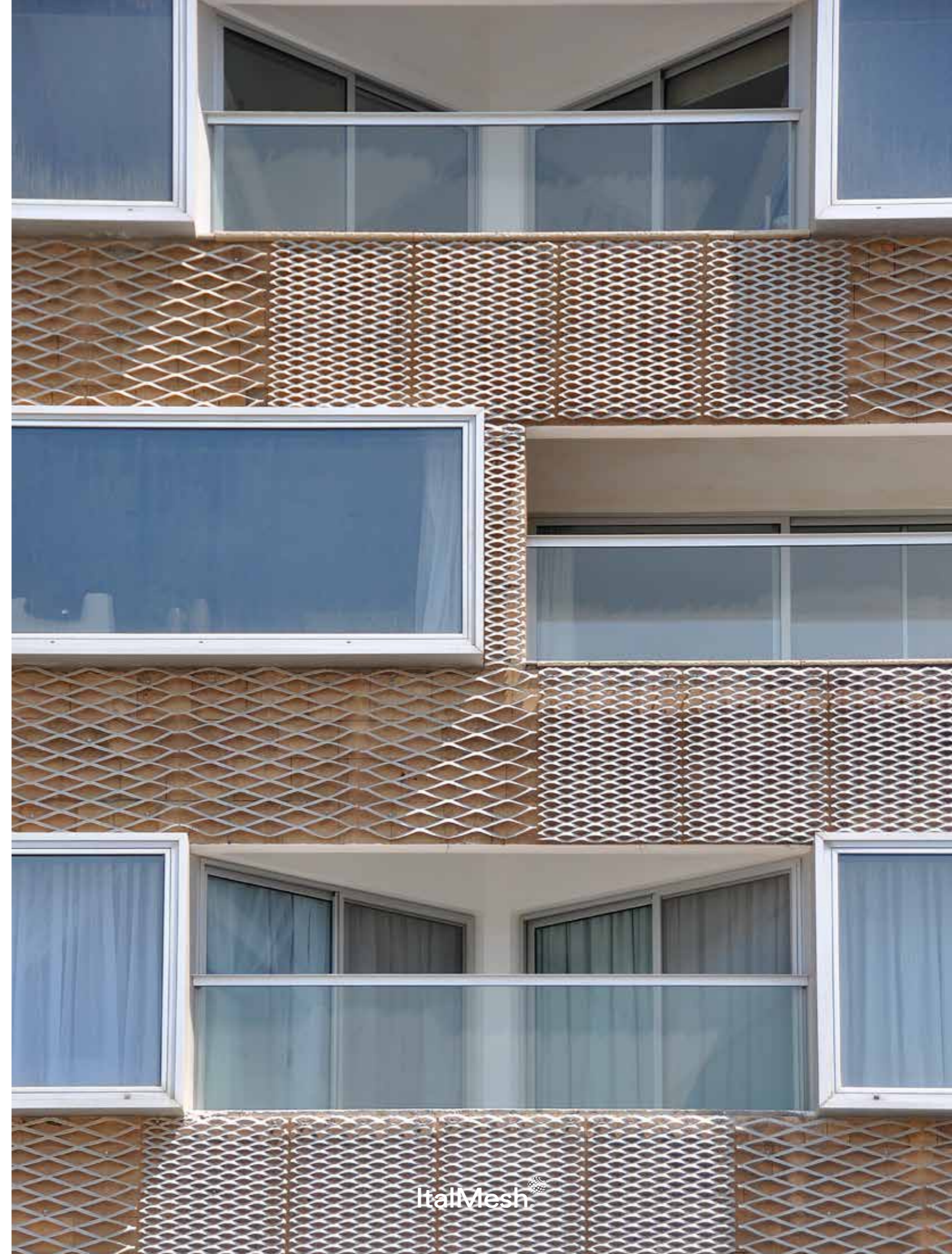
ItalMesh was chosen by the owners and the design studio Pad10 for the redevelopment of the facade of the entire building using expanded aluminum mesh. To give the building a dynamic appearance, ItalMesh used two different models of expanded mesh, the Brescia 200 and Brescia 400 model, powder coated making them extremely resistant, bearing in mind the climatic aspects of the area.

LOCATION
Kuwait City - Kuwait

TOTAL SQM
13.000

MESH
Brescia 200 / Brescia 400

ARCHITECT
Pad 10



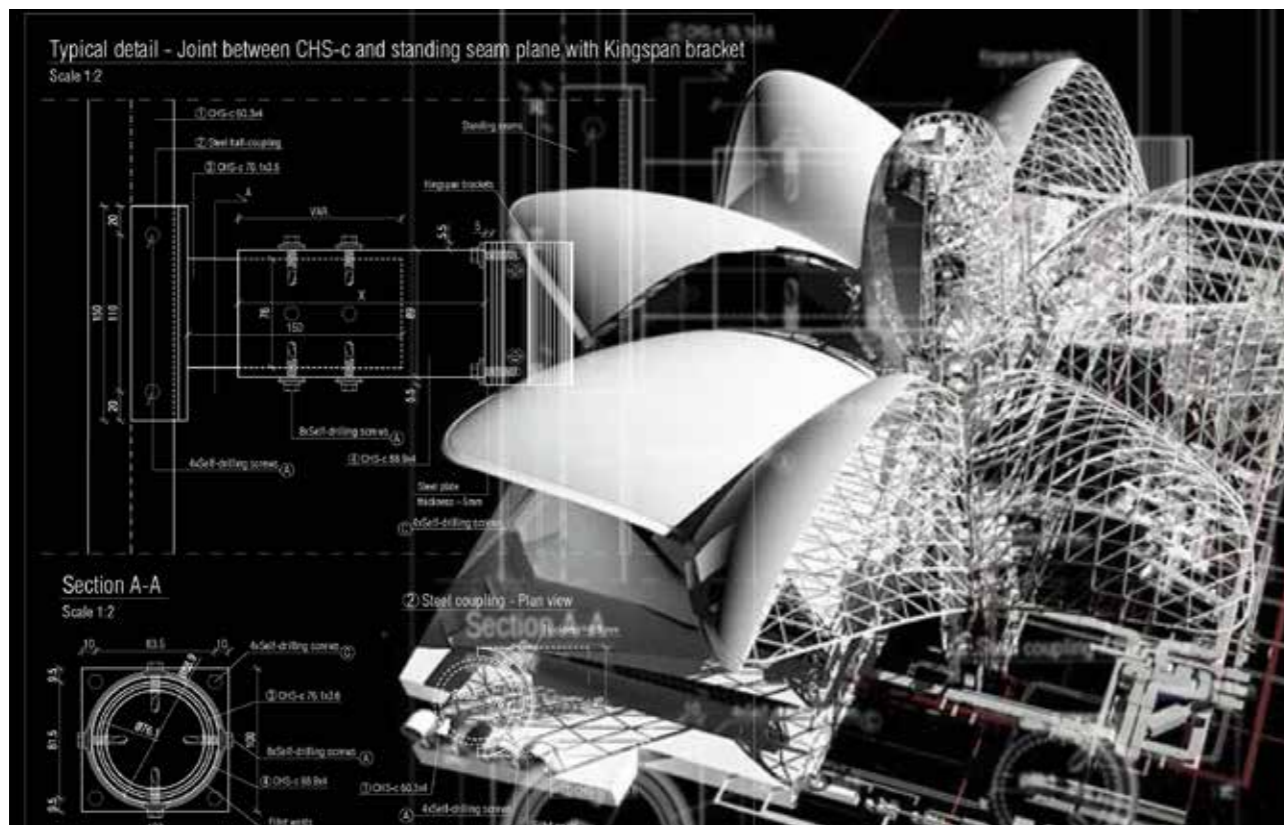
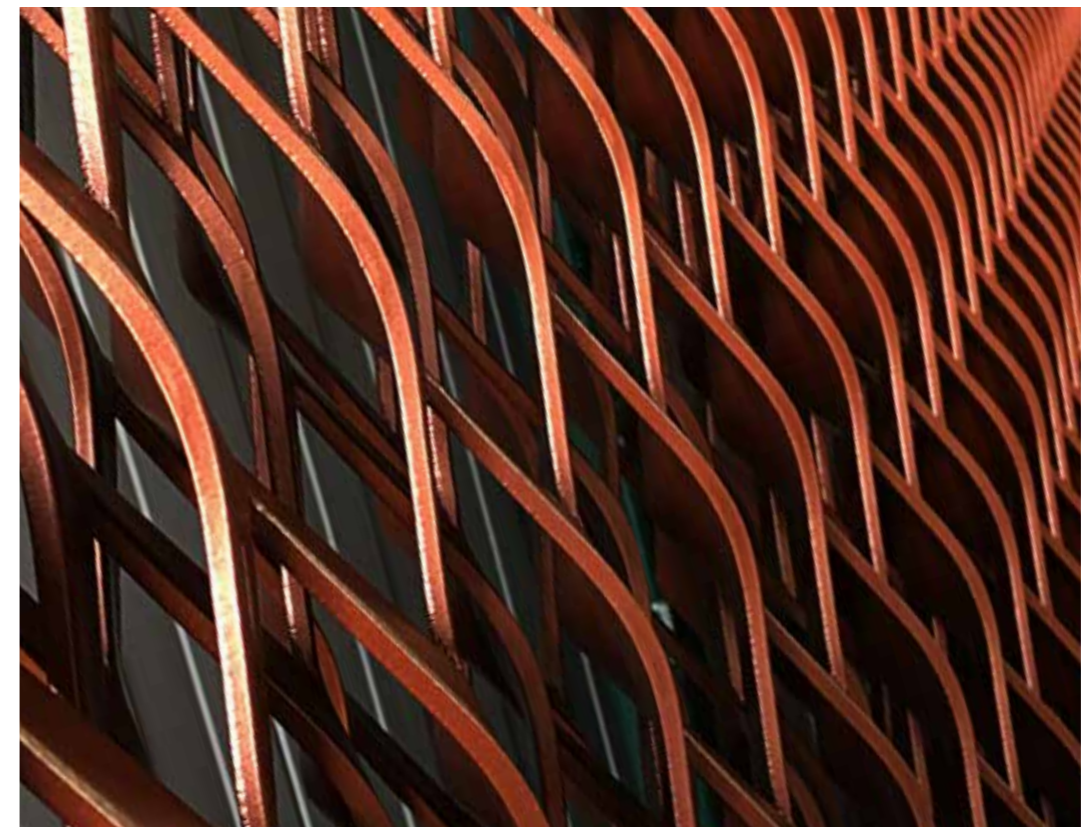
CASPIAN WATERFRONT

Shopping center of 120.000 square meters built in Baku, Azerbaijan, is a construction with a contemporary design, which recalls the local architectural forms. The expanded Italmesh Brescia 200 model meshes, which cover the central part of the structure, have been created and modeled with a double curvature one by one, recreating the movements and sinuosity of the flowers. The thickness used was defined after structural calculations in order to withstand the ice load, but at the same time allows for thermal expansion due to high summer temperatures. Starting from flat geometric shapes, the Italmesh team has developed a three-dimensional model that can be adapted to the surface of the project. Each panel has been studied individually and with extreme precision, as they are developed on different Cartesian planes.

LOCATION
Baku - Azerbaijan

TOTAL SQM
3.000

MESH
Brescia 200





CANTARELLI

Cladding of the warehouse and office building of a company dedicated to the storage and aging of Parmigiano Reggiano in Felino, in the province of Parma. The architect was inspired by the history and tradition of the geographical area, in fact the cladding, made with the Siena 300R mesh model, recalls the shape of the cheese that the company processes. The panels have been entirely profiled, calendered and press-folded with a particular processing in order to obtain the desired result. The choice of the finishing characteristic, in fact, is the color of the untreated forms of Parmigiano Reggiano since 1960.

LOCATION
Parma - Italy

TOTAL SQM
700

MESH
Siena 300R



NATEX LIVERPOOL

Situated in the university campus of Liverpool, Nutex is a project idealized for students.

For these students' residences, ItalMesh team has been selected for the realization of external facades with the use of expanded mesh panels model Siena150 powder coated in champagne color.

The panels have been planted alternated to the windows, creating a chessboard game that run across the whole facade, for a total of 800mq.

LOCATION
Liverpool - England

TOTAL SQM
800

MESH
Siena 150

ELNOS

Elnos, a shopping mall next to Ikea Brescia, fits with ItalMesh products to renew the aesthetical impact maintaining its purposes of healthy life, eco-friendly and with positive impact on the climate.

ItalMesh team has covered over 1000 mq of surface, 900 of them with expanded mesh model Siena 150 painted in mica bronze, an unique colour that highlights the solar reflections and goes well with the context.

Expanded aluminium meshes are produced with 100% recyclable materials, that, combined with Zero Gravity Eden panels, guarantee a remarkable fall of CO2 and make this project an example of responsible sustainable of aspiration.

LOCATION
Brescia – Italy

TOTAL SQM
1000

MESH
Siena 150 ZeroGravityEden



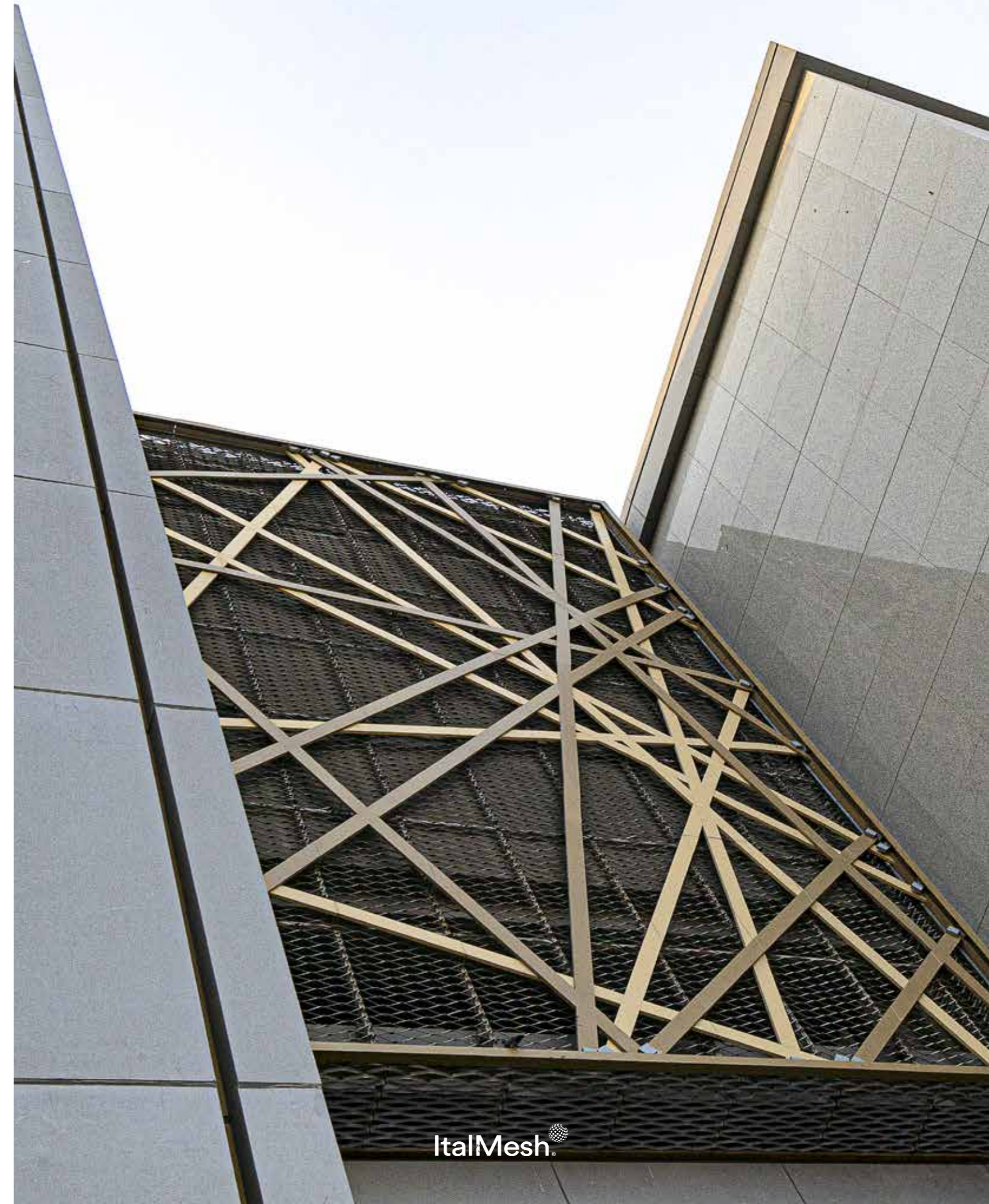
DUBAI MALL EXTENSION

For the expansion of the largest shopping center in the world located near Dubai Down Town and Burj Khalifa, Italmesh has created the cladding of the facades using expanded metal mesh BRESCIA 400 in aluminum, powder coated with RAL color 9007 and for the false ceiling the RIMINI 40 model in steel, powder coated with black color RAL 9005.

LOCATION
Dubai - UAE

TOTAL SQM
7.000

MESH
Brescia 400 / Rimini 40 / Brescia 200





FERRARI & MASERATI SHOWROOM

ItalMesh has contributed to the creation of the Dubai showroom of prestigious Italian car manufacturers. Expanded meshes were used for shielding the entrance of the building to obtain the sinuous effect desired by the customer. ItalMesh team has proceeded to create shaped panels through the water cutting of the expanded metal mesh. The model used is Brescia 250 in aluminum, the expanded metal mesh has been powder coated with matt RAL 9005 color.

LOCATION
Dubai - UAE

TOTAL SQM
400

MESH
Brescia 250



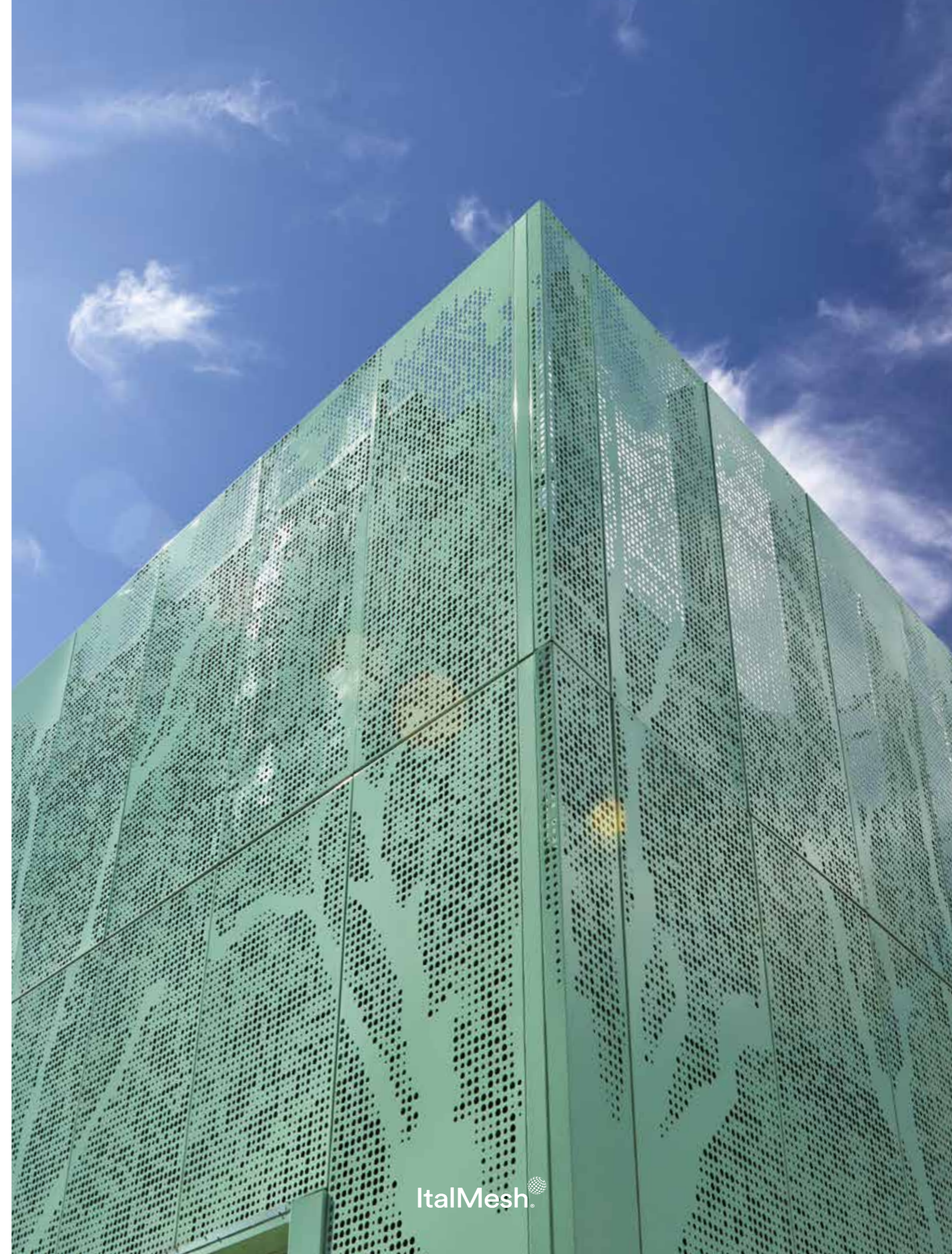
SYMBIAGRO

Cladding of an industrial building made with perforated aluminum sheet panels. The design of the holes and coating have been completely conceived and implemented by the ItalMesh team in accordance with the customer's expectations. The panels were powder coated with high-strength paint in NCS color.

LOCATION
Brescia - Italy

TOTAL SQM
750

MESH
Perforated sheet panels



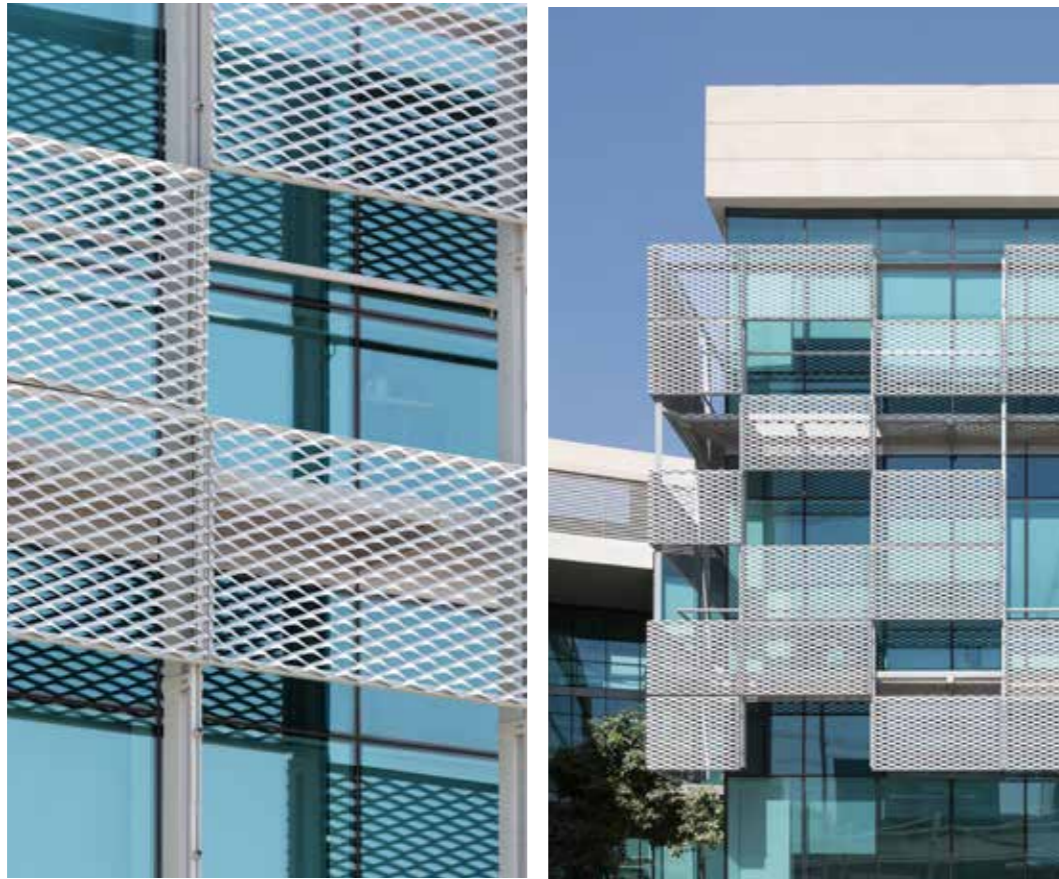
DSO TECHNO HUB

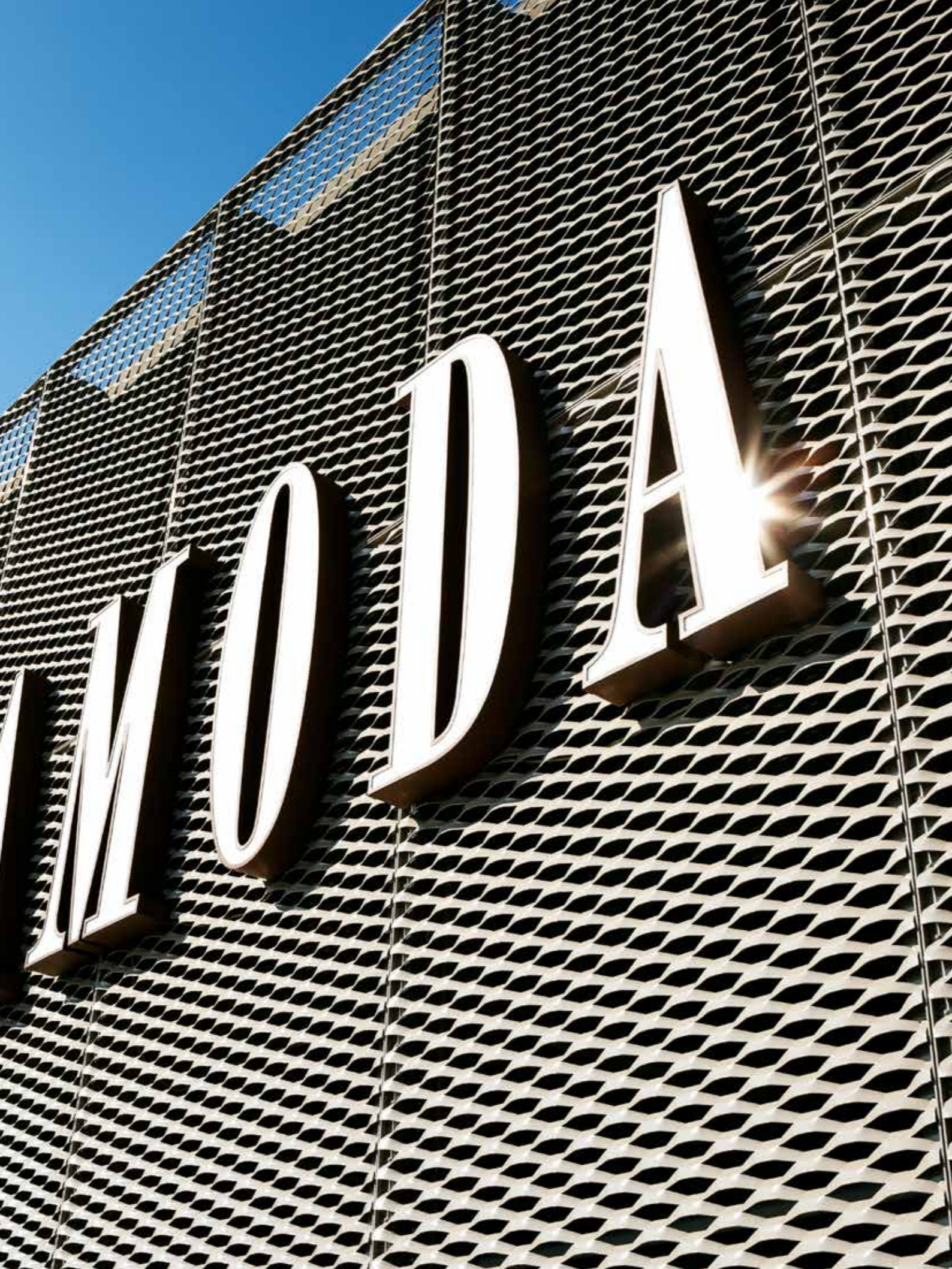
The first Smart City project wanted by the strategic management of the Dubai government, Techno Hub includes offices, residences, commercial spaces, sports and leisure facilities. The buildings were designed to be completely made of glass, but in order to shield some areas, the designers realized solar shading with expanded mesh. Italmesh has created and installed the panels on a structure with uprights painted in gray RAL 9006.

LOCATION
Dubai - UAE

TOTAL SQM
2.000

MESH
Brescia 200





MANTOVA MODA

The Italian client has decided to renovate and adapt an outdated building to the current stylistic needs. In addition to the internal renovation, it was decided to intervene also on the external appearance, entirely covering the building with expanded mesh Siena 150 powder-coated aluminum with the color of the NCS chromatic scale.

For the realization of the project in a short time and ensuring the final quality of the product, the team of designers has adopted a practical and innovative system, patented by ItalMesh, which allows a simple installation, thus obtaining an effect of continuous linearity of the façade. Particular attention has been paid to the corners, made in a single panel, thus ensuring maximum aesthetic performance and following the design requested by the client.

LOCATION

Mantova - Italy

TOTAL SQM

800

MESH

Siena 150



MASDAR ACCELERATOR

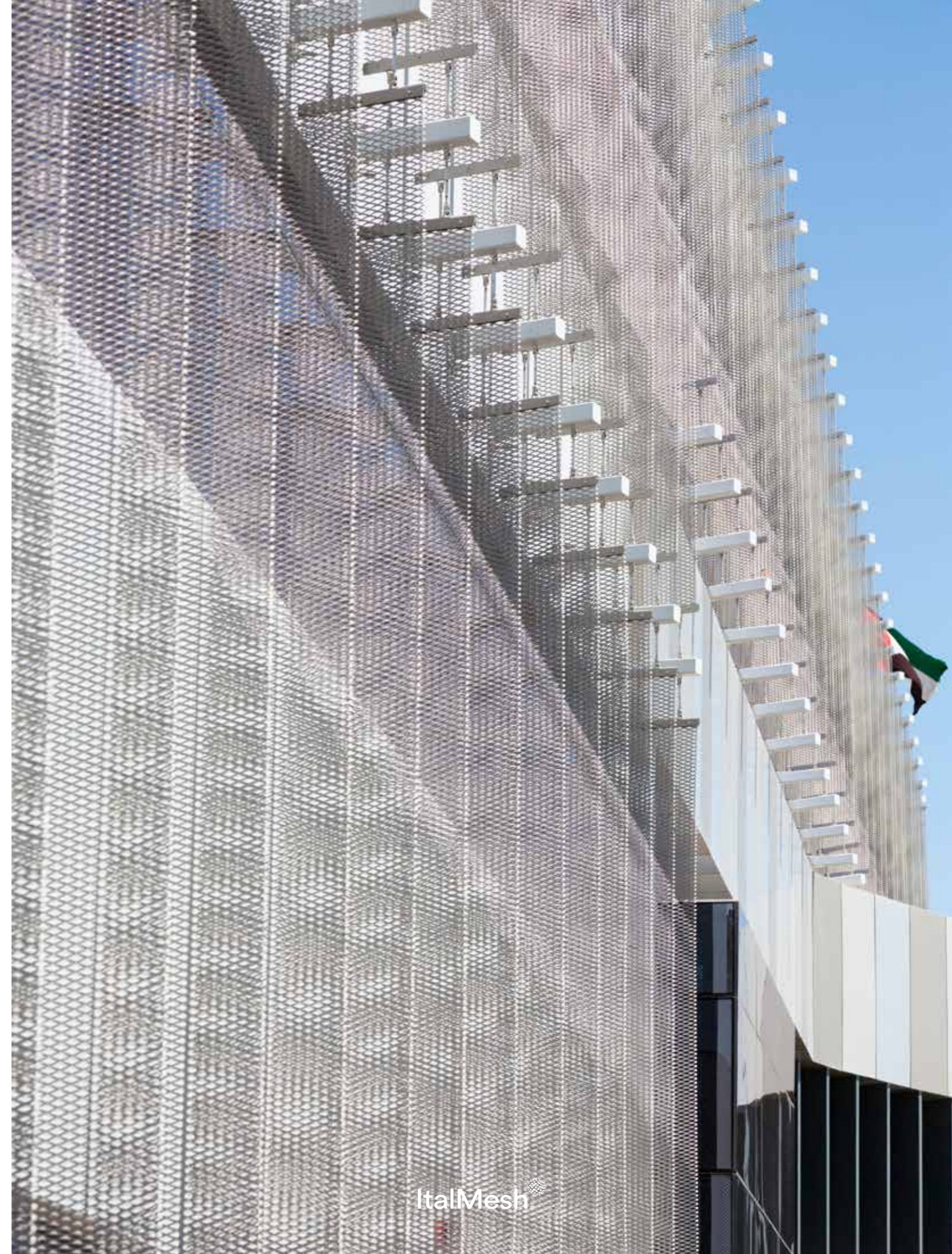
Facade made with ROMA 65 mesh in stainless steel 316, assembled and installed in a way to create a three-dimensional effect and at the same time create a solar shield. The assembly was carried out on site with a "sail-like" fixing system patented by ItalMesh.

Masdar City is a sustainable urban community in Abu Dhabi, the capital of the United Arab Emirates. It was built by Masdar, a subsidiary of Mubadala Investment Company, with the majority of seed capital provided by the Government of Abu Dhabi.

LOCATION
Abu Dhabi - UAE

TOTAL SQM
500

MESH
Roma 65



AIR POWER

The expanded meshes Siena 150 have been realized and shaped to cover the entrance of a known Emilian company.

Beside the meshes, about 30 modules of vertical garden ZeroGravityEden have been integrated, which have allowed the installation of over 900 plant species, selected by the client and ItalMesh team.

The aluminium meshes have been coated with powder ral 3003 opaque which incorporates the company logo.

ItalMesh has also supported the client for the realization of backlit signs.

LOCATION
Sassuolo - Italy#

TOTAL SQM
200

MESH
Siena 150





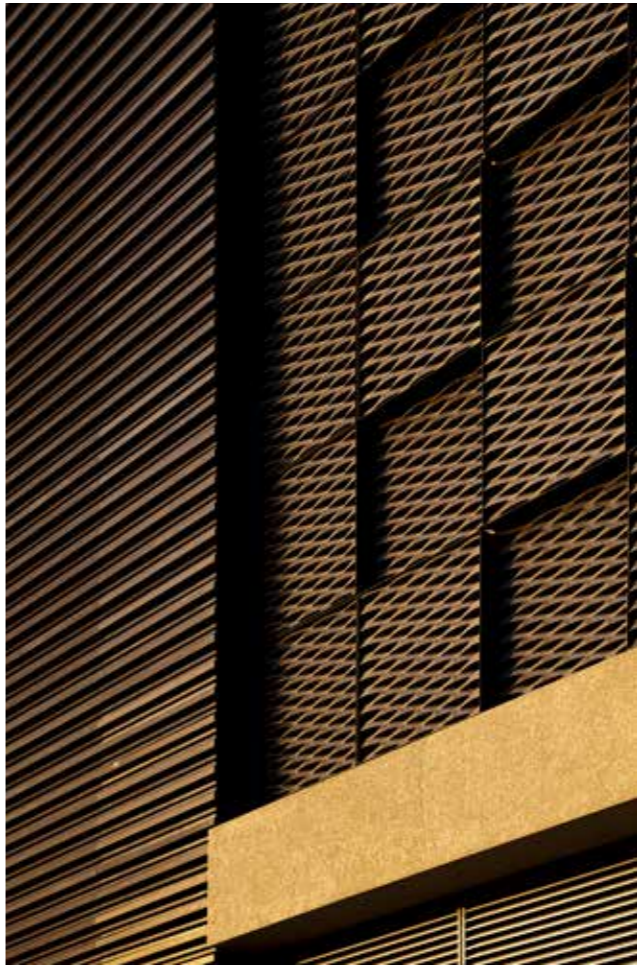
MARINA GATE

ItalMesh expanded metal mesh panels were used for the cladding of the facade of the multi-storey car park of the Marina Gate buildings, which overlook the Dubai Marina. Siena 400 model mesh in aluminum, powder coated, have been used in a way to create a game of contrasts while guaranteeing transparency and shading. It is very unique and innovative facade.

LOCATION
Dubai - UAE

TOTAL SQM
2.000

MESH
Rimini 45



AGRICOLA MASI

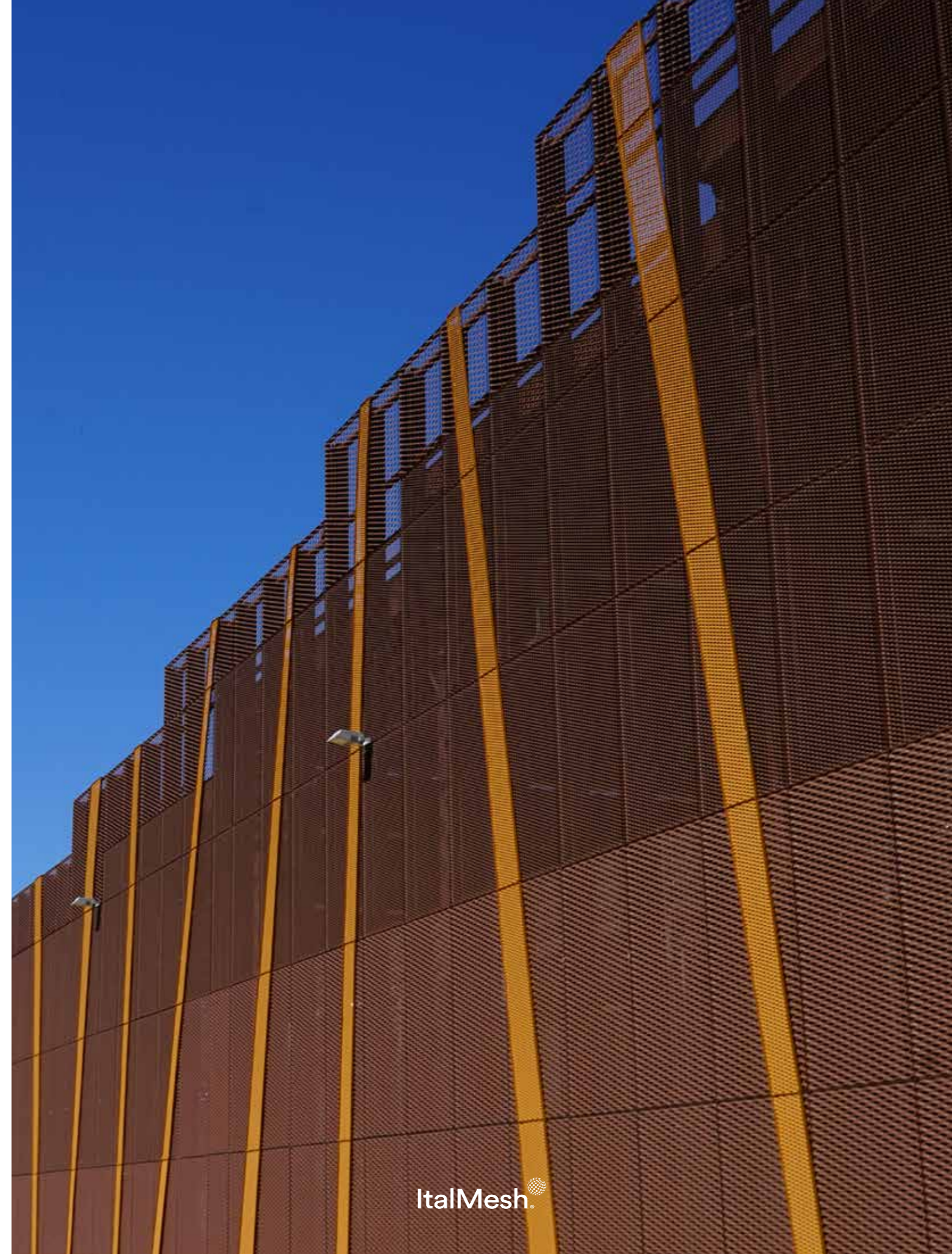
Important project carried out for the Agricola Masi Winery, the Amarone della Valpolicella producer. The new grape processing plant was entirely clad with ItalMesh aluminum expanded meshes Siena 100, 150 and 200 powder coated with copper effect.

The meshes installed help to ensure thermal and acoustic insulation, important benefits for wine production and it integrates perfectly with the surrounding hills.

LOCATION
Gargagnago di Valpolicella - Italy

TOTAL SQM
900

MESH
Siena 100 / 150 / 200





REEF TOWER

Residential and commercial tower in the Sport City area in Dubai. The expanded mesh, SIENA 150 in aluminum, in RAL 9001 color, are used to cover and protect the 3 floors of the parking lot from the sun, at the same time making it possible to recycle the air. The same panels are used for the decoration in the main entrance of the tower giving continuity to the design.

LOCATION
Dubai - UAE

TOTAL SQM
2.000

MESH
Siena 150



PLAY RESTAURANT

Italmesh worked on the interior design of Play Restaurant, one of the most popular restaurants and lounge bars in Dubai, located on the 36th floor of the well-known Hotel "The H Dubai".

For Play Restaurant, the Italmesh team designed and realized a three-dimensional false ceiling for which the structure and the meshes were entirely produced in Italy. In order to create the visual effect requested by the architects, panels of different shapes and sizes were used with same meshes direction orientation.

LOCATION
Dubai - UAE

TOTAL SQM
290

MESH
Torino 20



ALEJA LJUBLJANA

The cladding of the facade of the shopping center in Ljubljana, created in collaboration with the Pichler company, involves the use of different materials. ItalMesh contributed to its realization, supplying 530 panels of ROMA 85 and BRESCIA 200 meshes in aluminium powder coated. To satisfy the client, the panels were water-cut in a rhomboidal shape and entirely profiled, so as to make the structure rigid and flat.

LOCATION
Ljubljana - Slovenia

TOTAL SQM
600

MESH
Roma 85 / Brescia 200





LARUSMIANI SHOWROOM MILANO

Acoustic functionality, comfort, elegance, lightness of the panels, ease remove and an always excellent aesthetic result.

Larusmiani renounces its presence within the fashion district with a two-level store that houses the Automotive gallery and the first Luxury Experience Lab in the world. The luxury brand chooses ItalMesh for the creation of the new false ceiling with a style capable of combining heritage and innovation, in the name of absolute quality in full synergy with the brand's style and values.

90 square meters of 2 mm expanded mesh panels in aluminum model "Siena 70", all made to measure to follow the pre-existing structure to which they have been fixed.

The panels do not completely cover the area, they are intentionally separated from each other to confer volume and depth to the environment.

Powder coated RAL5004 semi-gloss blackish blue which gives an unmistakable elegance.

LOCATION
Milan - Italy

TOTAL SQM
90

MESH
Siena 70



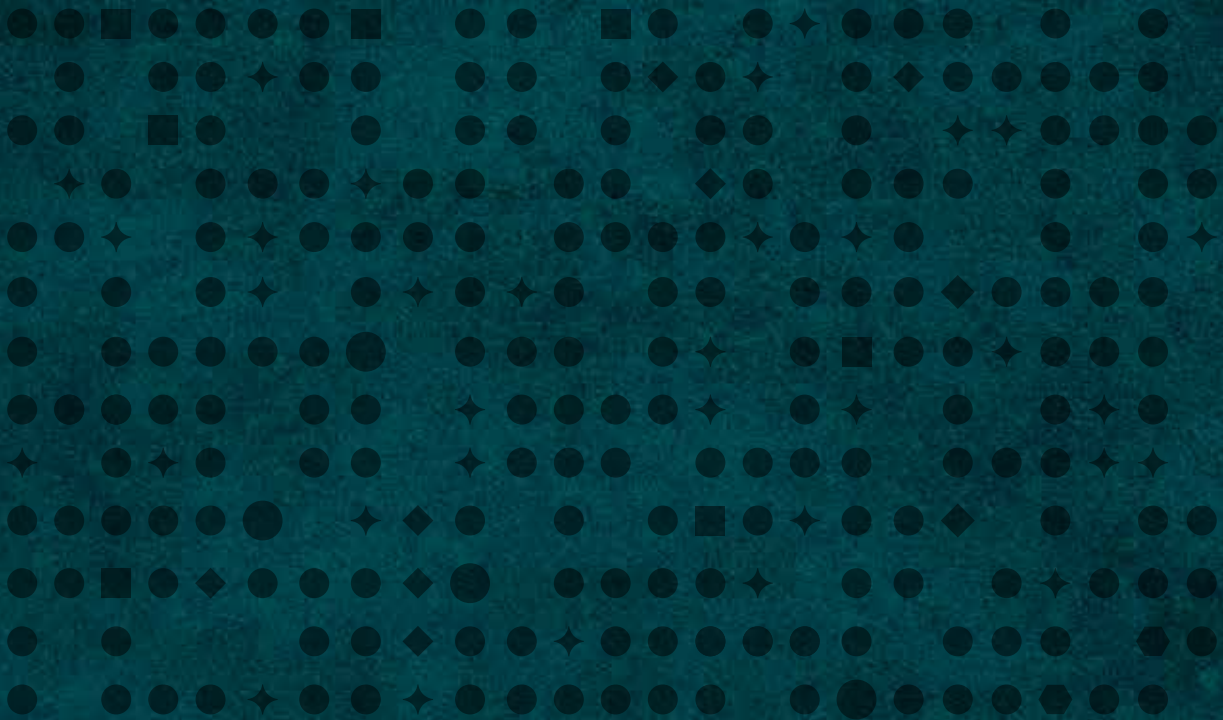


ItalMesh srl
Via Artigianale, 65
Montirone
Brescia - Italy
Ph. +39 030 2170539
italy@italmesh.com

UAE Marketing Office
United Arab Emirates DMCC
Ph. +971 509 533229
f.dicaro@italmesh.com



italmesh.com



ItalMesh[®] 
Dressing Innovative Projects

